

Chapter  
2

## Assembly Procedure

*Please follow the information provided in this section to perform the complete assembly procedure of the notebook. Be sure to use proper tools described before.*

After you have completed the previous chapter of complete disassembly, please follow this chapter to assemble the notebook back together. This chapter describes the procedures of the complete notebook assembly. In addition, in between procedures, the detailed assembly procedure of individual modules will be provided for your service needs.

The assembly procedure consists of the following steps:

- LCD Module
- Bottom Case
- CPU Module
- Motherboard Module
- I/O Board Module
- Top Case Module
- Keyboard Module
- ODD Module
- WLAN Module
- SSD Card Module
- Memory Module
- Main Door Module
- HDD Module
- Battery Module

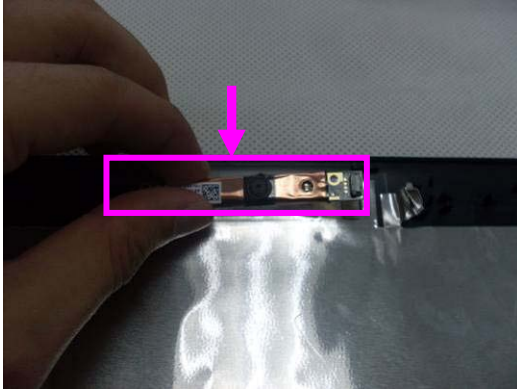
LCD  
MODULE

## LCD Module

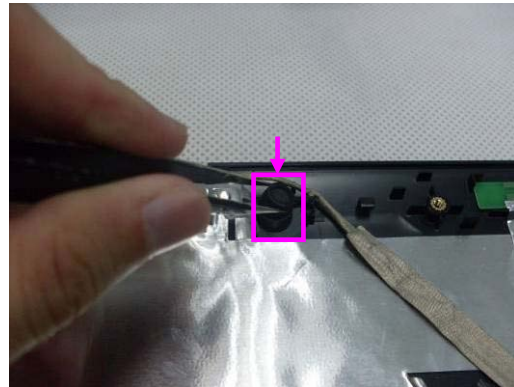
*The illustrations below show how to assemble and install the LCD module of the notebook.*

### LCD Module Assembly

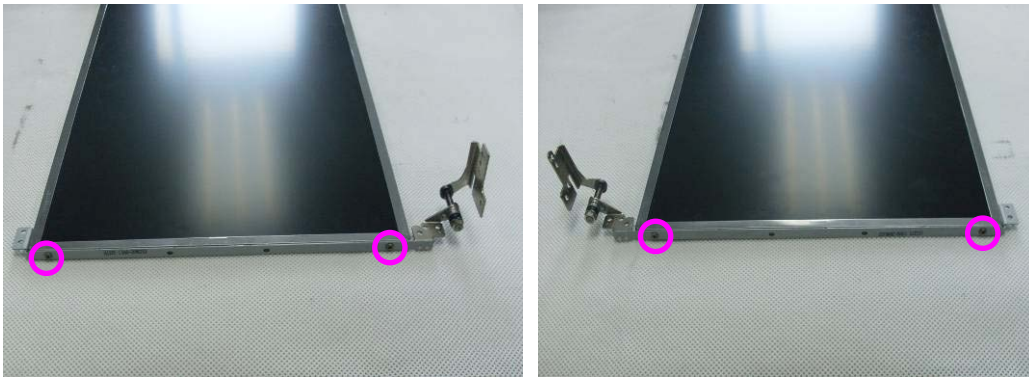
1. Install the camera on the LCD cover.



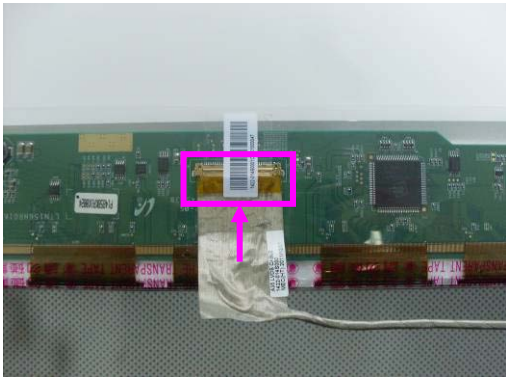
2. Install the MIC cable and connect it with camera board.



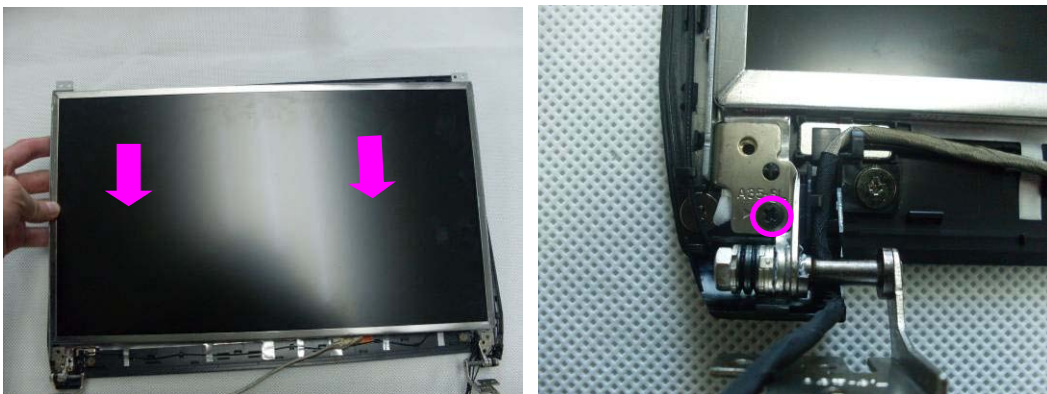
3. Install the panel bracket and secure 4 screws(M2\*3) on two LCD panel bracket.



4. Install the LVDS cable and connect it with LCD panel then paste one piece of tape.

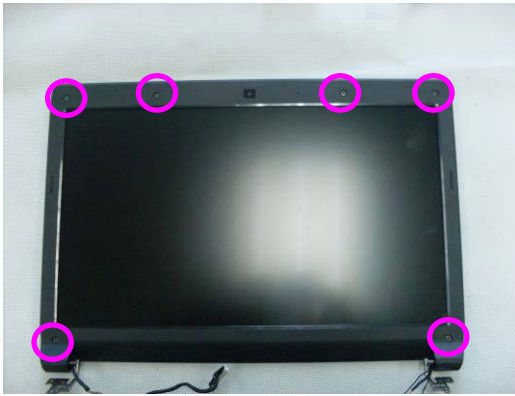


5. Install the LCD hinges and panel on the LCD back cover, then secure 2 screws (M2.5\*4) on LCD panel bracket.





6. Install LCD front bezel, and press the four sides to fix it. Secure 6 screws (M2.5\*4) on LCD front bezel. Then install 6 rubbers on the LCD bezel.



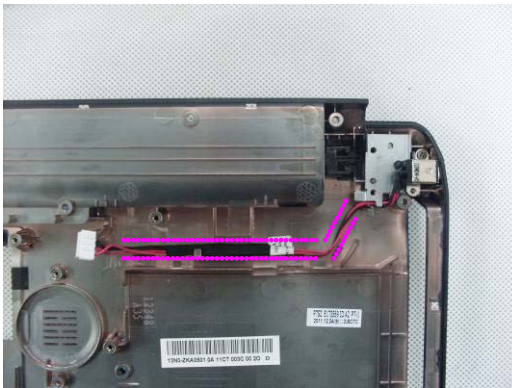
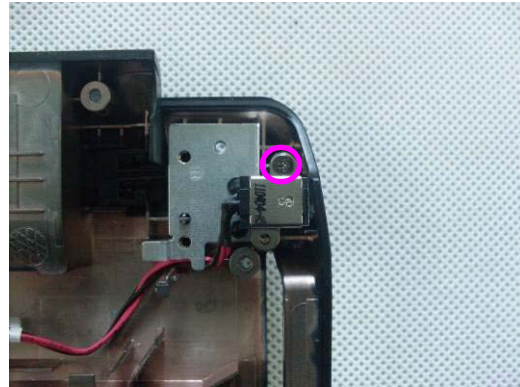
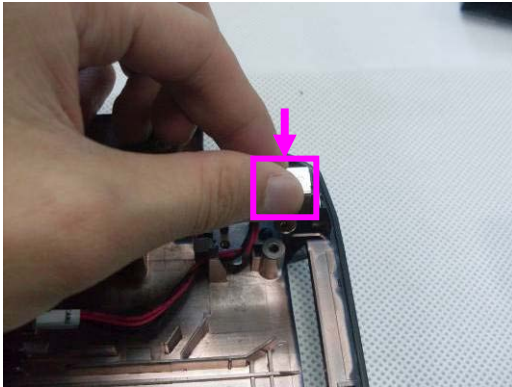
BOTTOM CASE  
MODULE

## Bottom Case Module

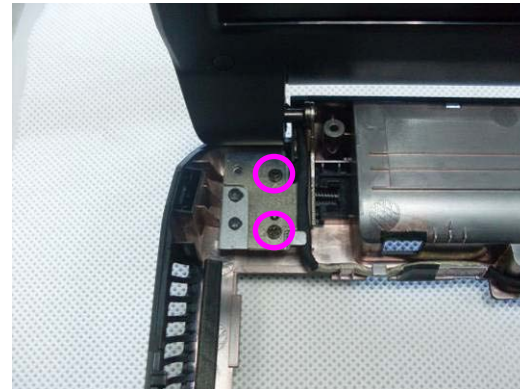
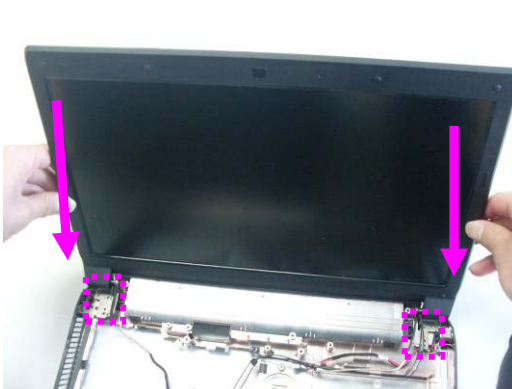
The illustrations below show how to assemble and install the bottom case module of the notebook.

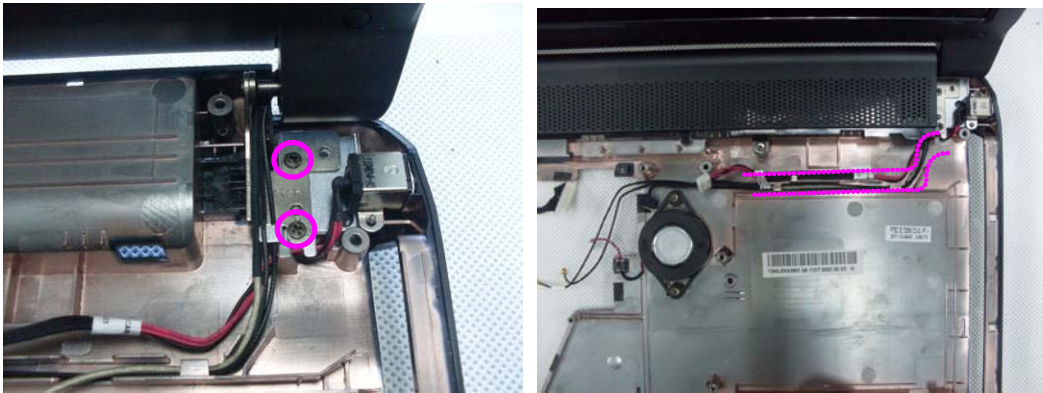
### Bottom Case Module Assembly

1. Install the DC-in cable on the bottom case and secure 1 screws (M2.5\*6) on the bottom case. Take care of the location of the cable.

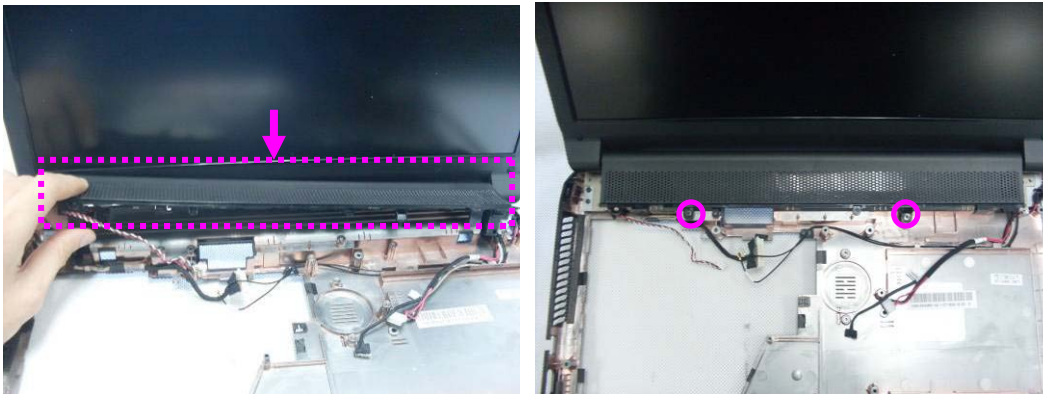


2. Install the LCD module on the bottom case and secure 4 screws (M2.5\*5) on the bottom case. Take care of the location of the cable.

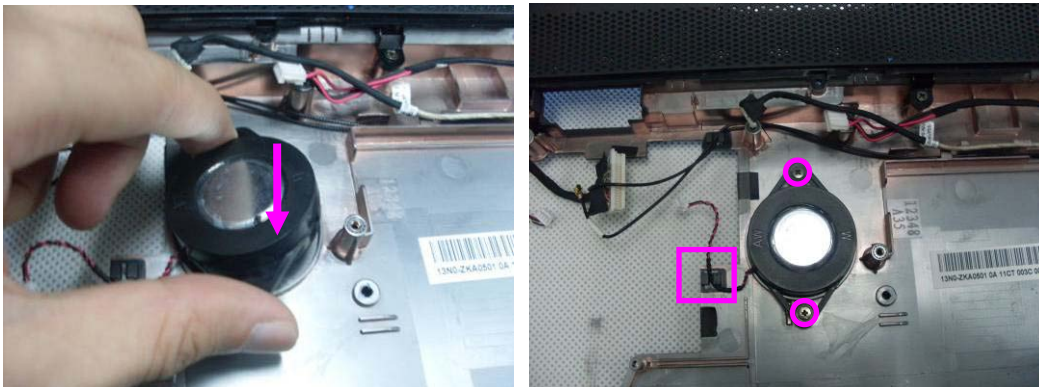




3. Install speaker② on bottom case and secure 2 screws (M2.5 \* 5) to fix it.



4. Install speaker① on bottom case and secure 2 screws (M2.5 \* 5) to fix it.



CPU

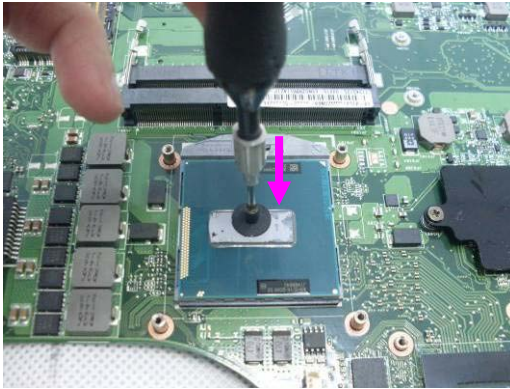
MODULE

## CPU Module

*The illustration below shows how to install CPU Module to the notebook.*

### CPU Module Installation

1. Use the CPU vacuum to “suck up” the CPU. Install the CPU and use a single-slotted screwdriver to fix it. Turn the non-removable screw here 180 degrees counter-clockwise to secure the CPU.

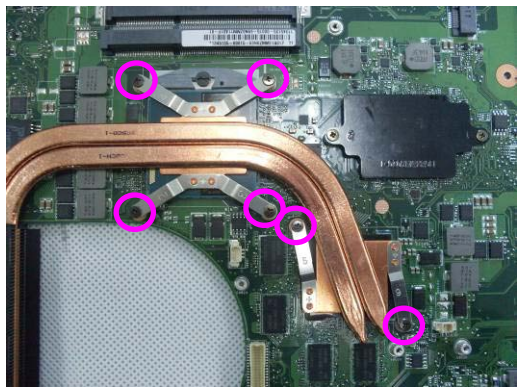
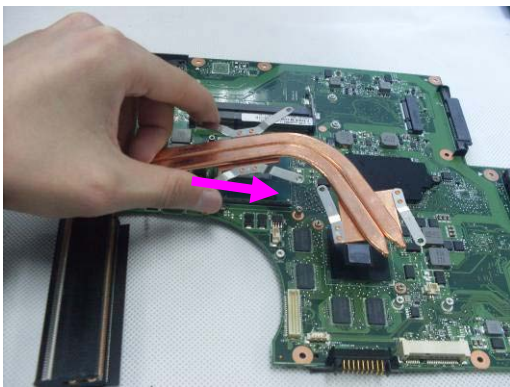


## Motherboard Module

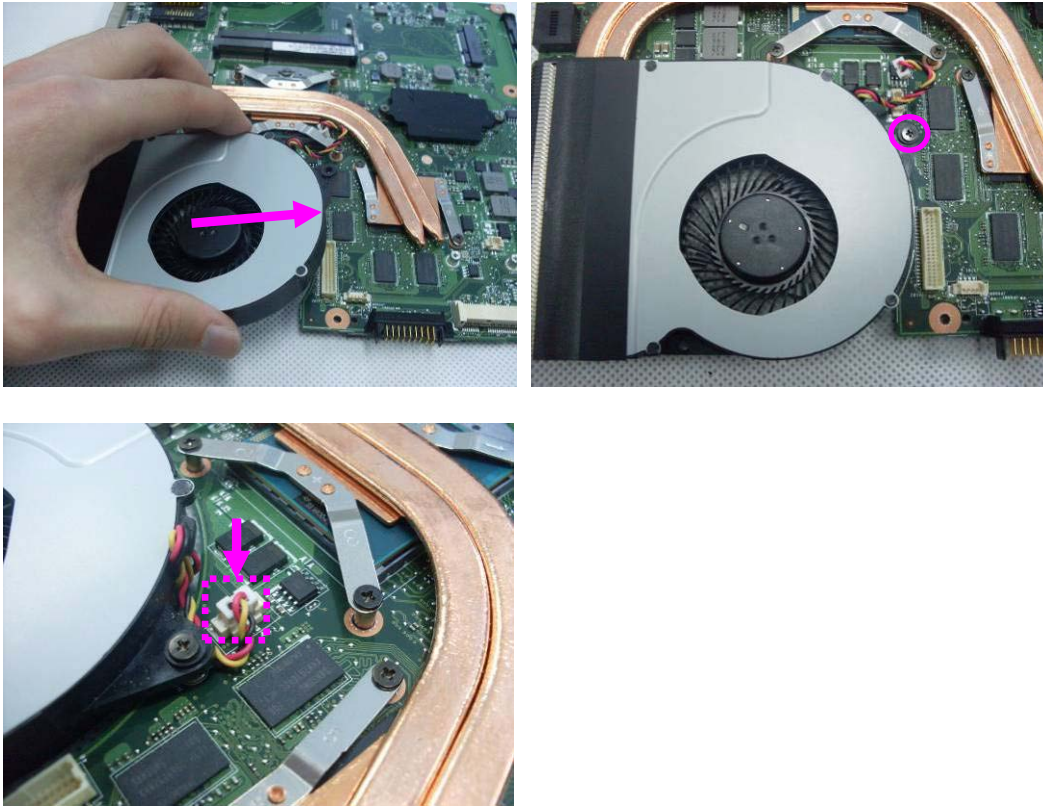
*The illustrations below show how to assemble and install the motherboard module of the notebook.*

### Motherboard Module Assembly

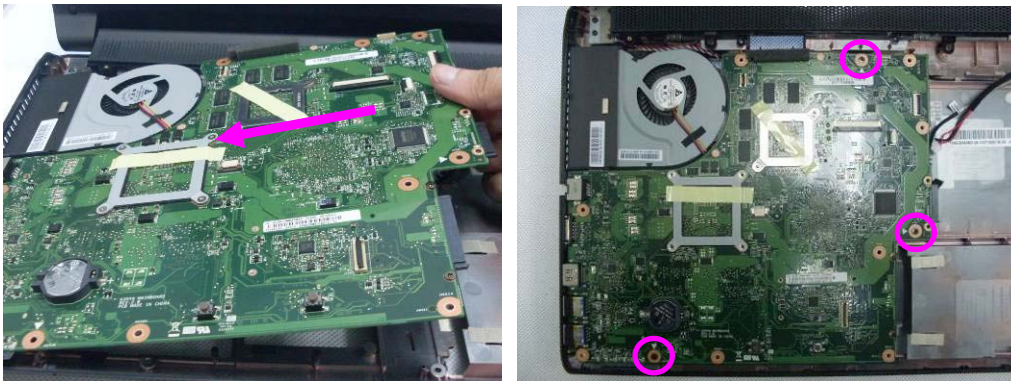
1. Install the heat sink and secure 6 screws (M2\*5) to fix it.



2. Install the fan module on the motherboard, then secure 1 screw (M2\*5) on fan module and connect the fan cable.



3. Place the motherboard on the bottom case and secure 3 screws (M2.5 \* 5).



4. Connect the MIC cable and the DC-in cable onto the motherboard.



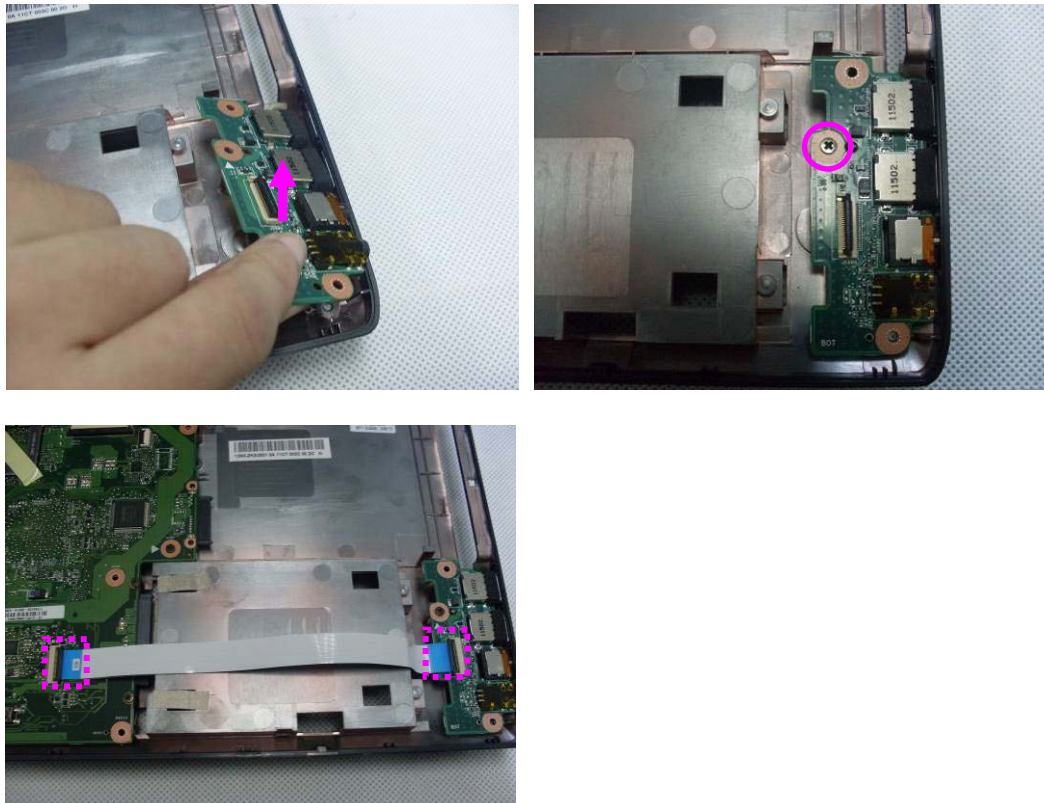
### I/O BOARD MODULE

## I/O board Module

The illustrations below show how to assemble the I/O Module.

Assemble I/O board Module

1. Place the motherboard on the bottom case and secure 1 screw (M2.5 \* 5). Then connect the I/O cable from motherboard to the I/O board.



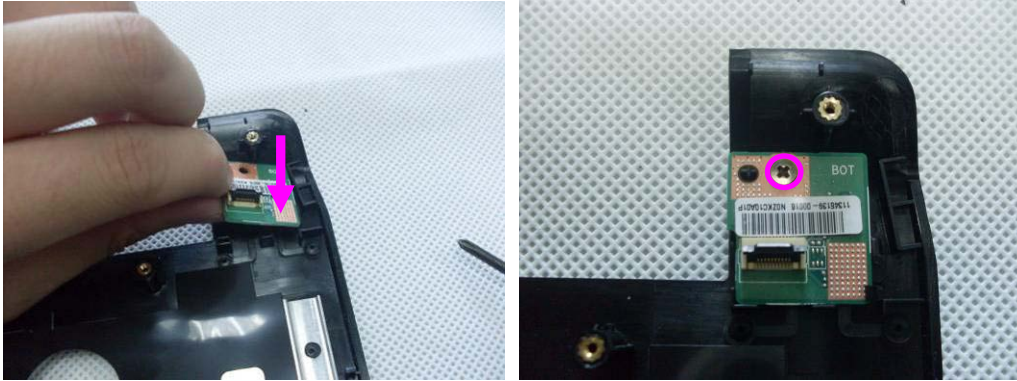
TOP CASE  
MODULE

## Top Case Module

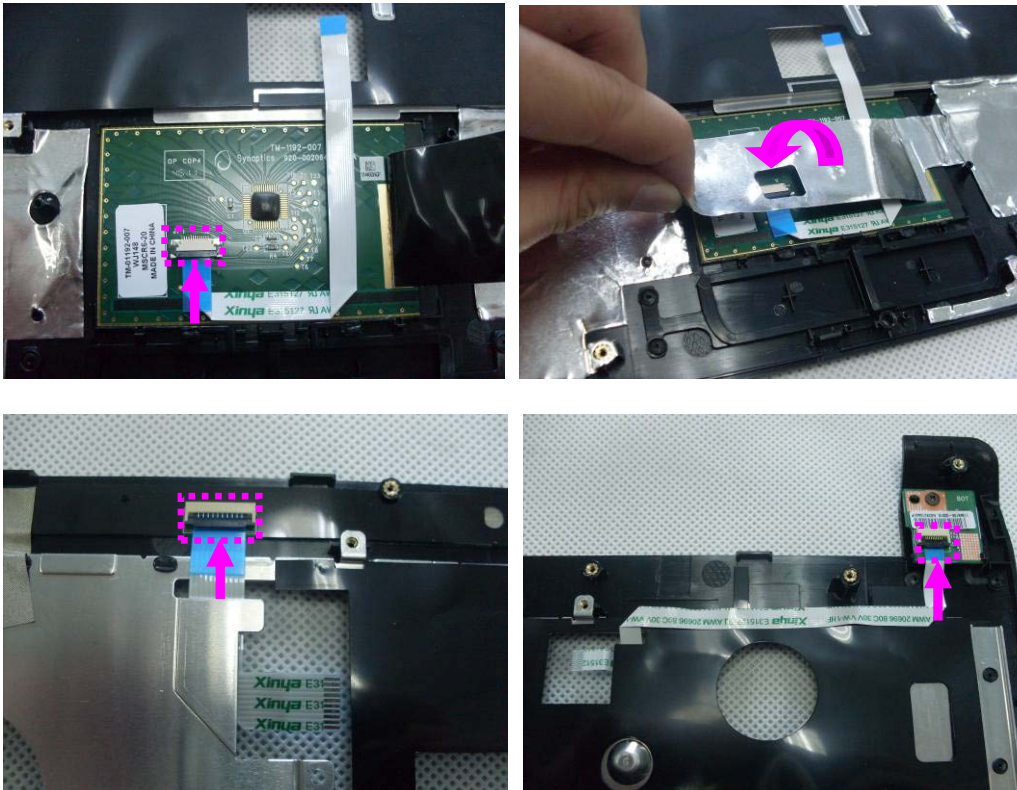
The illustrations below show how to assemble and install the top case module of the notebook.

### Top Case Module Assembly

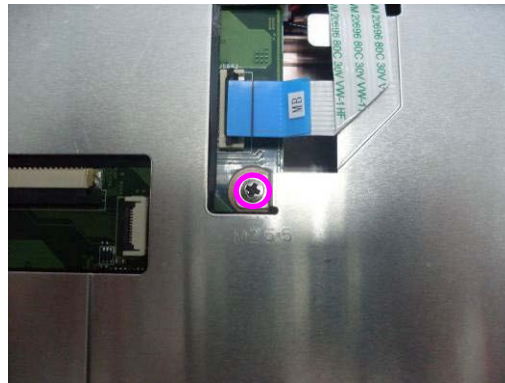
1. Place the power switch board on the top case and secure 1 screw (M2 \* 3).



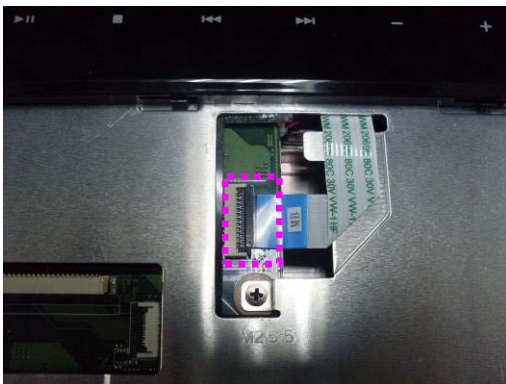
2. Connect 3 cables(touch pad cable,function board cable,power switch cable) and paste the AL foil on the touch pad.



3. Install the top case module on the bottom case and secure 1 screw (M2.5\*5) on the top case.



4. Connect power board cable, touchpad cable and function board cable to motherboard.



5. Secure 20 screws (M2\*5) on bottom case.

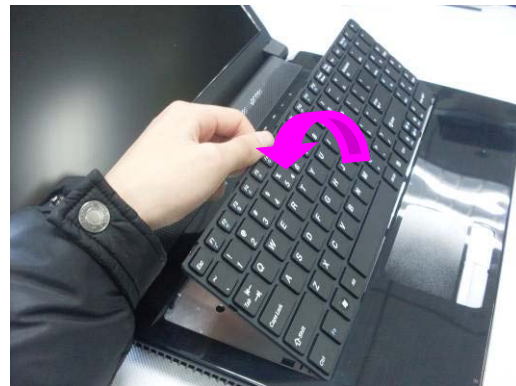
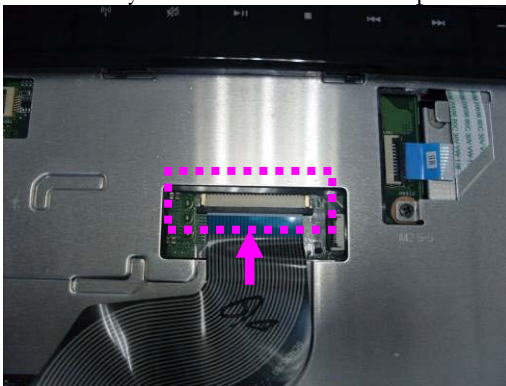


## Keyboard Module

The illustrations below show how to assemble and install the Keyboard Module of the notebook.

### Keyboard Module Assembly

1. Connect the Keyboard FPC and install the key board on the top case. Then press the four sides of keyboard to fix it on the top case.

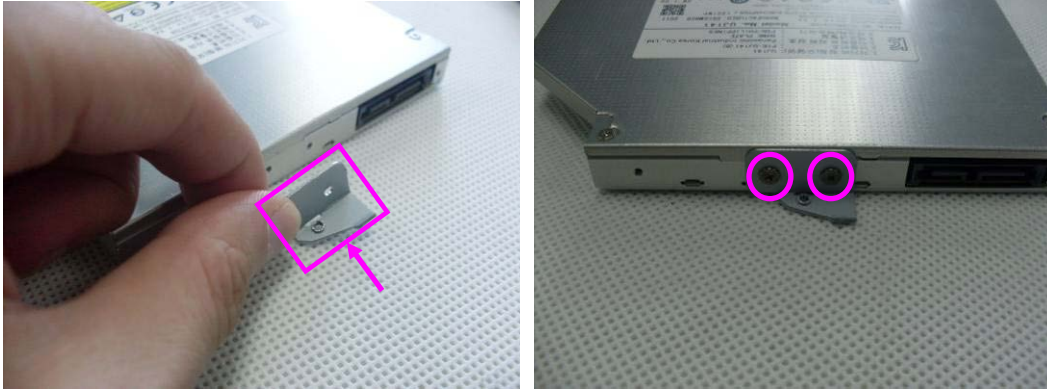


## ODD Module

The illustrations below show how to assemble and install the ODD Module of the notebook.

### ODD Module Installation

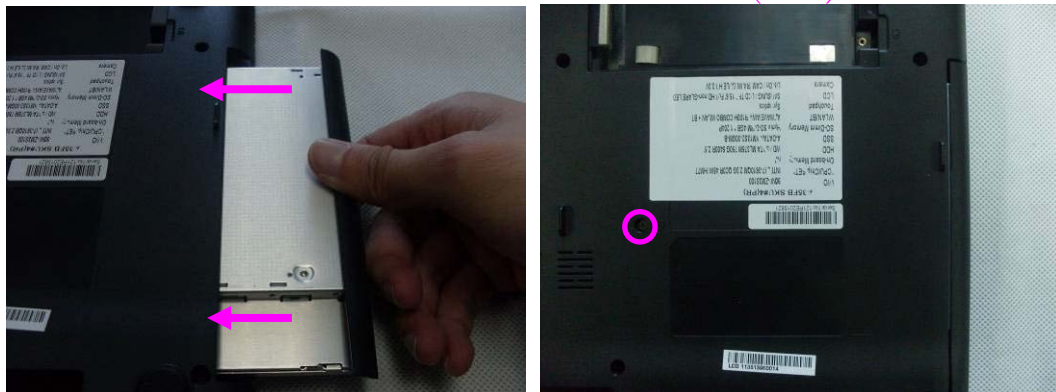
1. Secure **2 screws (M2\*3)** to fix the bracket on the ODD.



2. Assemble the ODD bezel on the ODD.



3. Install the ODD module on the notebook and secure **1 screw (M2\*5)** to fix it.



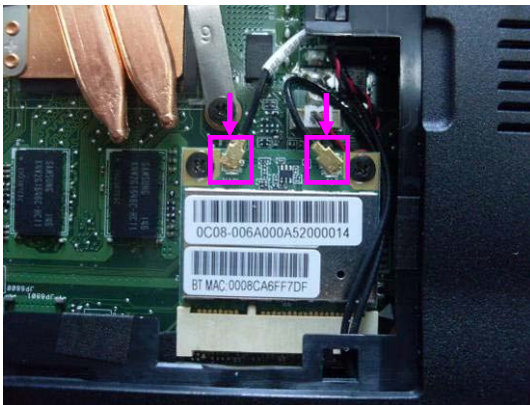
WLAN  
MODULE

## Wireless LAN Module

*The illustration below shows how to assemble and install WLAN Module to the notebook.*

### Wireless LAN Module Installation

1. Insert the wireless LAN card to the slot and secure 2 screws (M2\*3) on it. Then connect the antennas with wireless LAN card.



SSD CARD  
MODULE

## SSD Card Module

*The illustration below shows how to assemble and install SSD Card Module to the notebook.*

### SSD Card Module Installation

1. Insert the SSD card to the slot and secure 2 screws (M2\*2) on it.



MEMORY  
MODULE

## Memory Module

*The illustration below shows how to assemble and install Memory Module to the notebook.*

### Memory Module Installation

1. Insert memory at the same 45° angles and press down until it clicks into the latches.

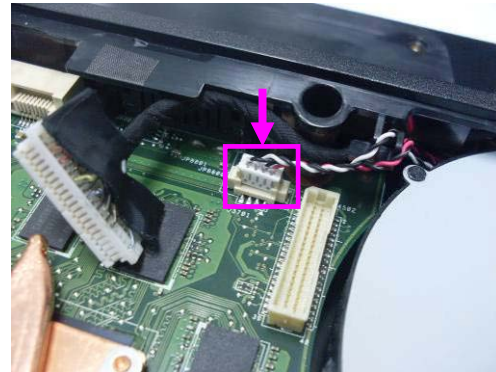
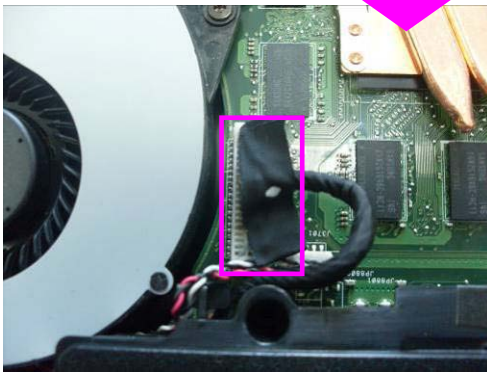
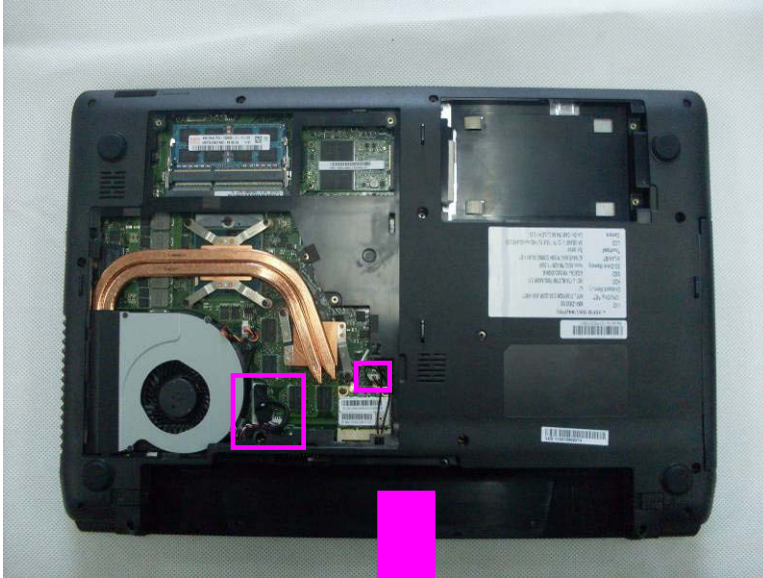


## Main Door Module

*The illustrations below show how to assemble and install the Main Door Module of the notebook.*

### Main Door Module Installation

1. Connect the 3 cables on motherboard(LVDS cable,2 speaker cables).



2. Install the main door on bottom case and secure 3 screws (M2\*5) to fix it.

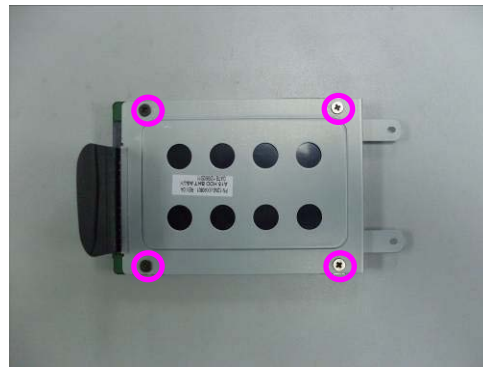
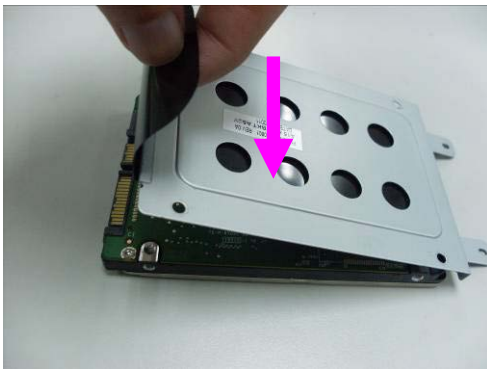


### HDD Module

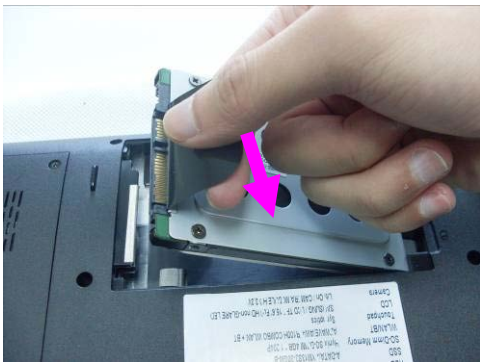
The illustrations below show how to assemble and install the HDD Module of the notebook.

#### HDD Module Installation

1. Install HDD module on the HDD bracket and secure 4 screws (M3\*3) to fix it.



2. Install the hard disk module and pull it toward the direction of the arrow.



3. Install the HDD door on bottom case and secure 2 screws (M2\*5) to fix it.



### BATTERY MODULE

## Battery Module

*The illustration below shows how to install Battery Module to the notebook.*

### Battery Module Installation

1. Install the battery and press it down .Lock the battery latch.

