

## Assembly Procedure

*Please follow the information provided in this section to perform the complete assembly procedure of the notebook. Be sure to use proper tools described before.*

After you have completed the previous chapter of complete disassembly, please follow this chapter to assemble the notebook back together. This chapter describes the procedures of the complete notebook assembly. In addition, in between procedures, the detailed assembly procedure of individual modules will be provided for your service needs.

The assembly procedure consists of the following steps:

- LCD Module
- Top Case Module
- Touch Pad Module
- I/O Board Module
- Thermal Module
- WLAN Module
- SSD Card Module
- Memory Card Module
- HDD Module
- Battery Module
- Bottom Case Module
- Keyboard Module

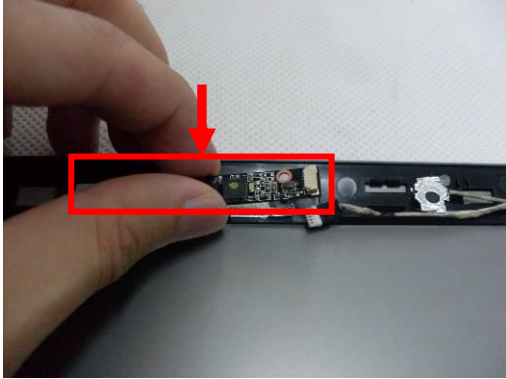
**L C D**  
**M O D U L E**

## LCD Module

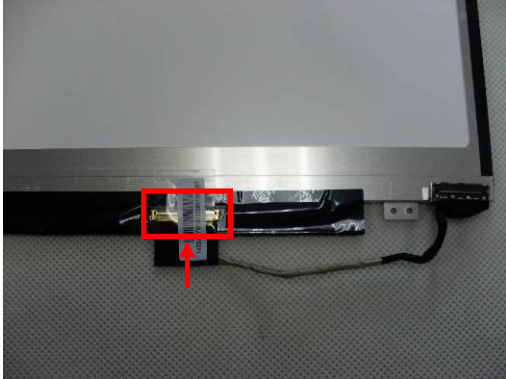
The illustrations below show how to assemble and install the LCD module of the notebook.

### LCD Module Assembly

1. Install the camera board into the slot and connect the MIC cable.



2. Connect the LVDS cable with LCD panel.



3. Install the LCD panel and secure 4 screws (M2\*2.5) to fix it on LCD cover.



4. Press the bezel edges softly to install LCD front bezel and LCD cover.



5. Secure 4 screws (M2\*2.5) on LCD module and install 4 rubbers.



---

### TOP CASE MODULE

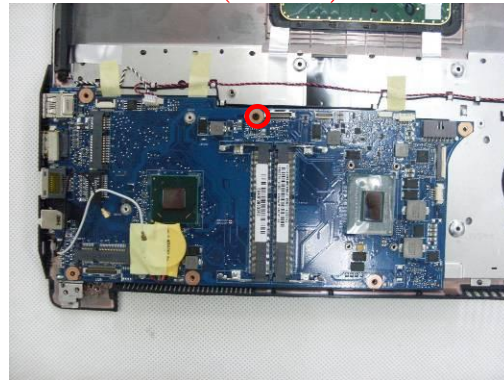
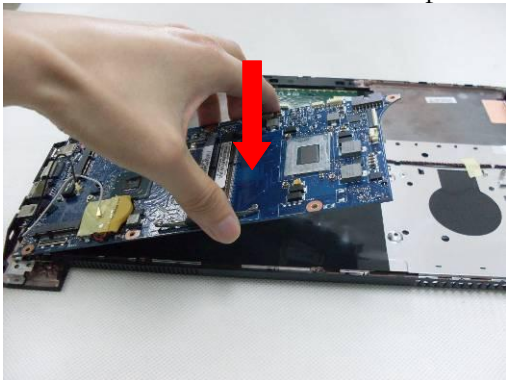
---

## Top Case Module

The illustrations below show how to assemble and install the top case module into the notebook.

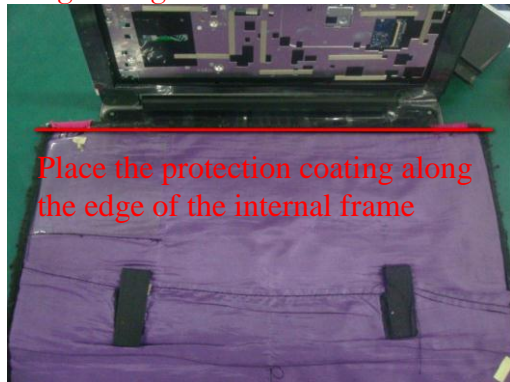
### Motherboard Assembly

1. Install the motherboard on the top case and secure 1 screw (M2 \* 2.5) to fix it.

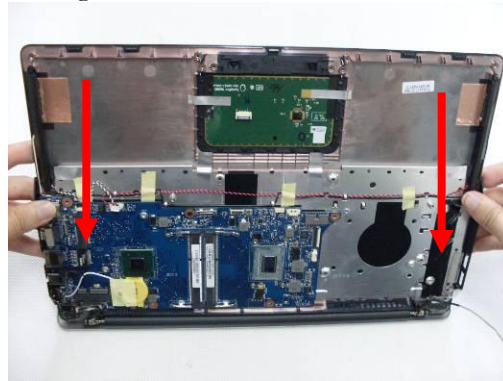
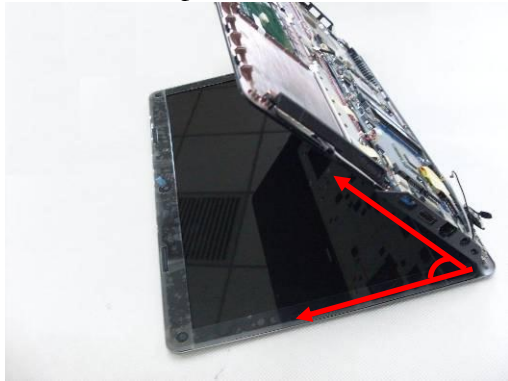


### LCD Module Assembly

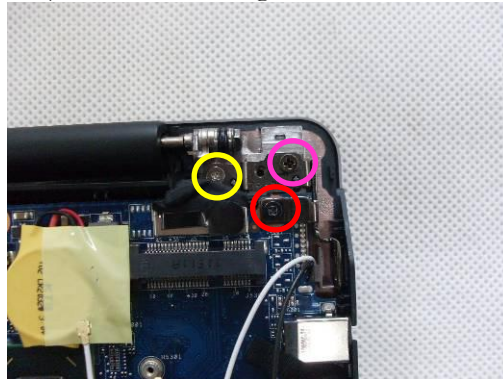
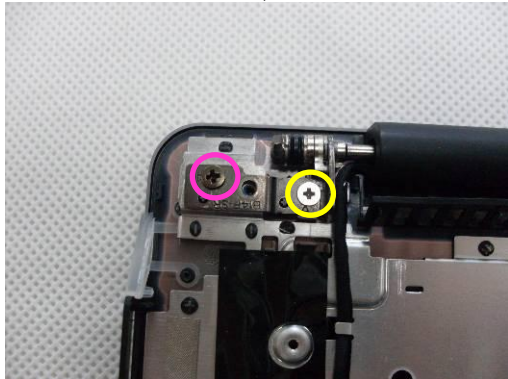
1. Place the protection coating on the LCD bezel. (Caution: Protection coating should be placed along the edge of the internal frame of the LCD bezel according to the photo below).



2. Install the top case and LCD module at 45° angle.

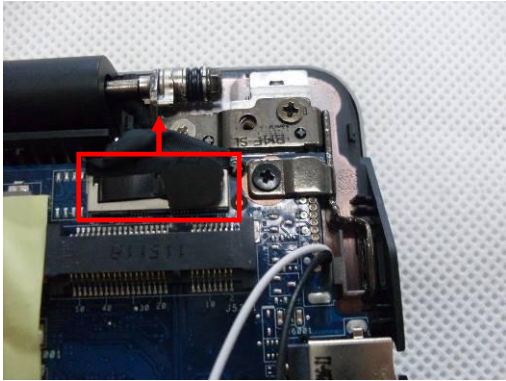


3. Secure the 5 screws (M2.5\*4, M2.5\*2.5, M2\*4) on the LCD hinge.



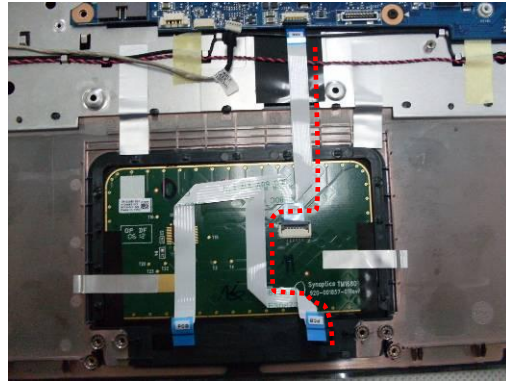
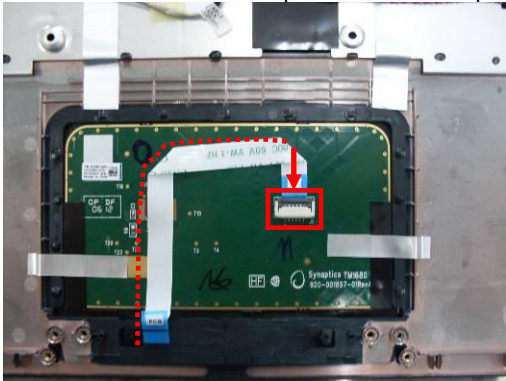


4. Connect the LVDS cable with the motherboard.

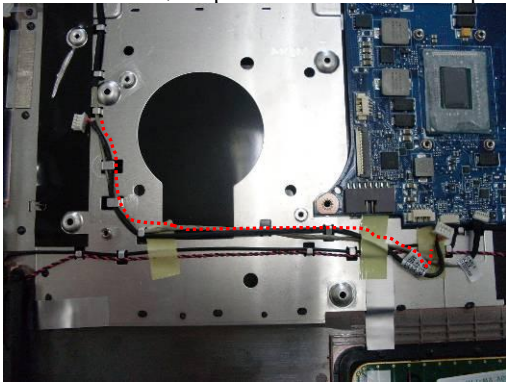


### Remove Cables

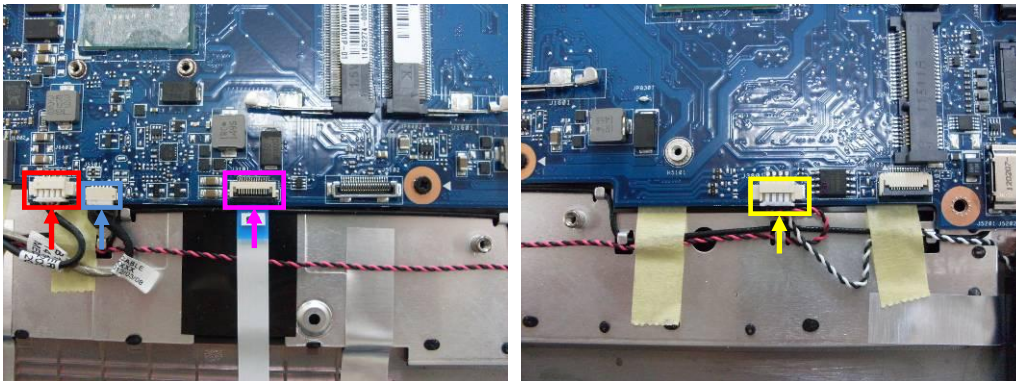
1. Install the two touch pad cables on top case.



2. Install the I/O power cable on the top case.



3. Connect the **I/O power cable**, **MIC cable**, **touch pad cable** and **speaker cable** with motherboard.



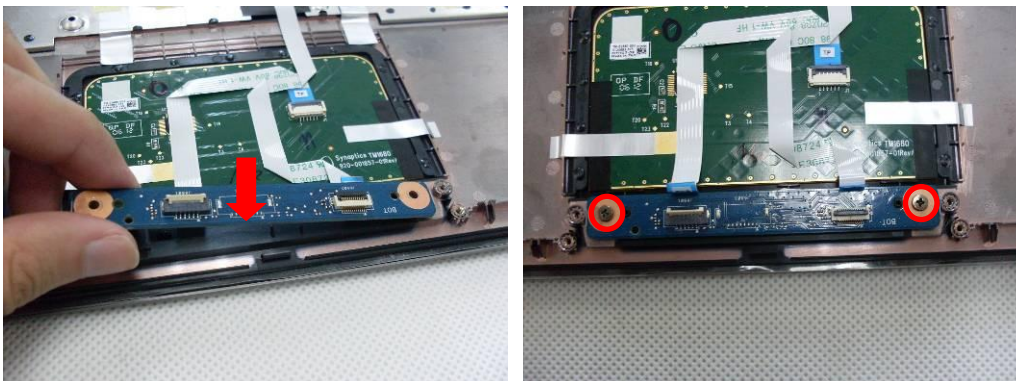
## Touch Pad Board Module

The illustrations below show how to install the touch pad board Module into the notebook.

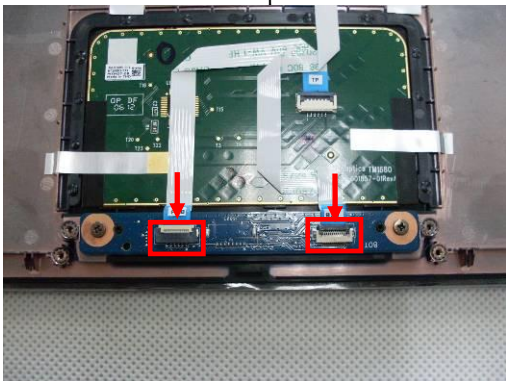
### TOUCH PAD BOARD MODULE

#### Touch Pad Board Module Assembly

1. Install touch pad board on the top case and secure **2 screws (M2\*2.5)** on the touch pad board.



2. Connect two touch pad FFC cables on touch pad board.



---

**I / O   B O A R D**  
**M O D U L E**

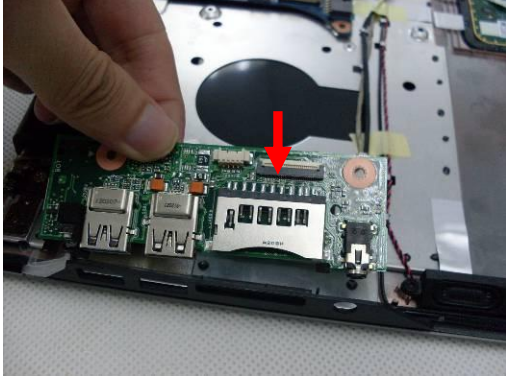
---

## I/O board Module

*The illustrations below show how to disassemble and remove the I/O Module.*

### Remove I/O board Module

1. Install the I/O board and secure 1 screw (M2\*2.5), then connect the I/O cable.





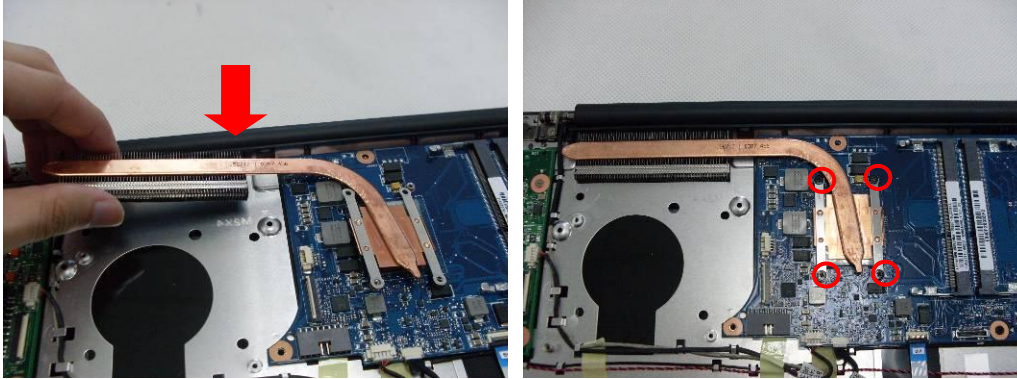
**T H E R M A L  
M O D U L E**

## Thermal Module

The illustrations below show how to assemble and install the thermal module into the notebook.

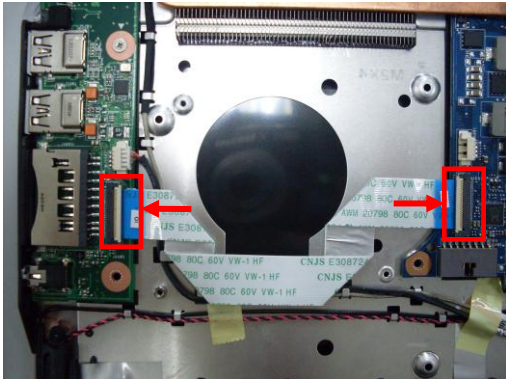
### Heatsink Module Assembly

1. Install the heatsink on motherboard and secure 4 screws (M2\*4) to fix it.

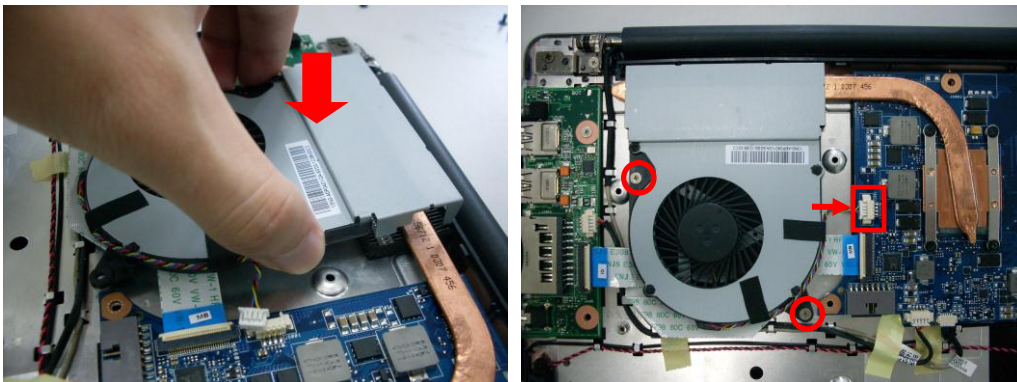


### Fan Module Assembly

1. Connect the IO FFC cable with motherboard.



2. Install the fan and secure 2 screws (M2.5\*2.5) to fix it, connect the fan cable with motherboard.





WLAN  
MODULE

## Wireless LAN Module

The illustration below shows how to assemble the Wireless LAN module into the notebook.

### Wireless LAN Module Assembly

1. Insert the WLAN card into the slot and secure 1 screw (M2\*2.5), then connect the antenna.



SSD  
MODULE

## SSD Module

The illustration below shows how to assemble the SSD module into the notebook.

### SSD Module Assembly

1. Insert the SSD card into the slot and secure 1 screw (M2\*2.5) to fix it.



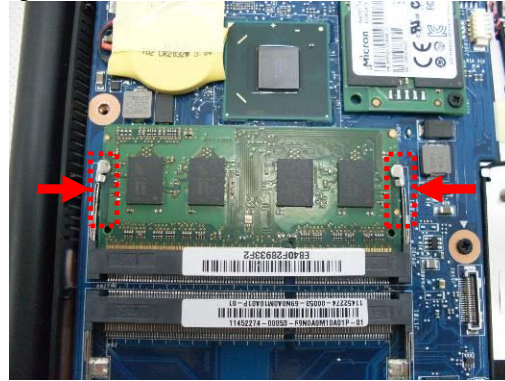
MEMORY  
MODULE

## Memory Module

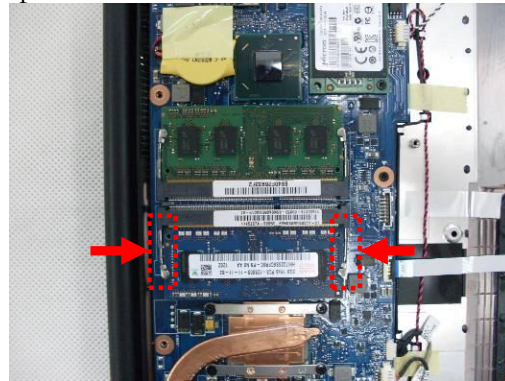
The illustration shows how to assemble the memory module into the notebook.

### Memory Module Assembly

1. Insert memory at the same 45° angles and press down until it clicks into the latches.



2. Insert memory at the same 45° angles and press down until it clicks into the latches.



---

**H D D**  
**M O D U L E**

---

## HDD Module

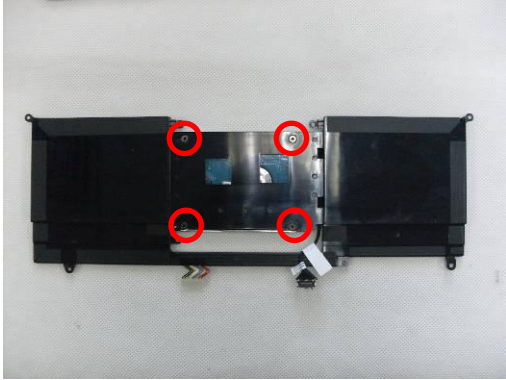
*The illustrations below show how to assemble the HDD module into the notebook.*

### HDD Module Assembly

1. Connect the HDD cable with HDD.



2. Secure 4 screws (M3\*3) on battery to fix HDD.





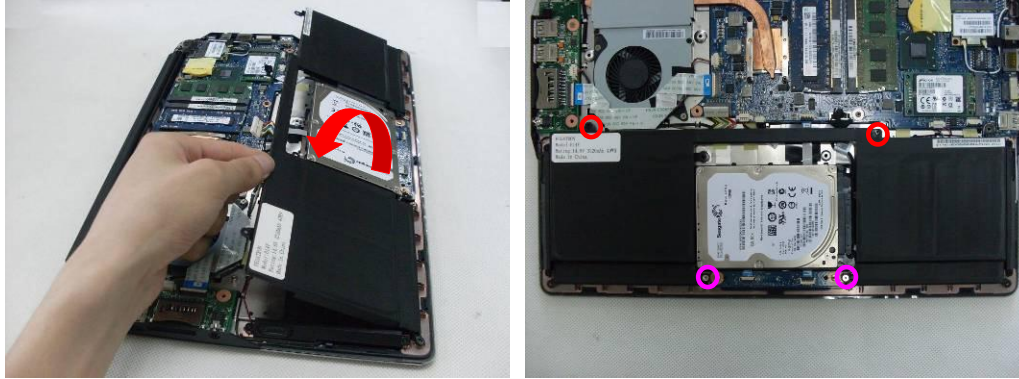
**BATTERY  
MODULE**

## Battery Module

The illustrations below show how to assemble the battery module into the notebook.

### Battery Module Assembly

1. Install the battery and secure 2 screws (M2\*4) & 2 screws (M2\*2.5) to fix it.



2. Connect the HDD SATA cable and battery cable with motherboard.



### Important Notice:

#### SOP for Battery Shipping mode

1. Copy Wbattery file to system root folder(c:\:)
2. Cmd.exe run as administrator.
3. Change the path to c:\Wbattery and run install.bat

```
C:\Windows\System32>cd \wbattery
C:\wbattery>install.bat
C:\wbattery>
```

4. Run battery shipping mode batch file as below and the computer will shutdown after 1s.



```
C:\wbattery>  
C:\wbattery>wbatteryloop.bat
```

**Notice:** when run wbattery Tool in the end, the machine does not unplug AC, it will not shutdown.

## Bottom Case Module

### BOTTOM CASE

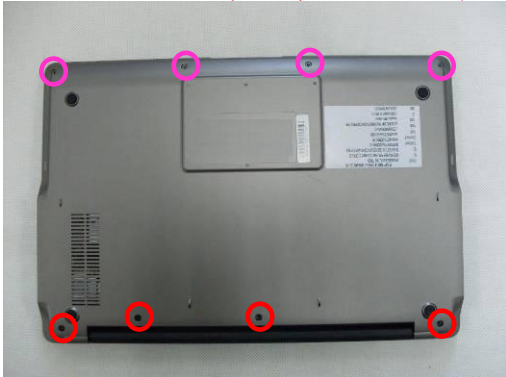
The illustrations below show how to assemble the bottom case module of the notebook.

### Bottom Case Module Assembly

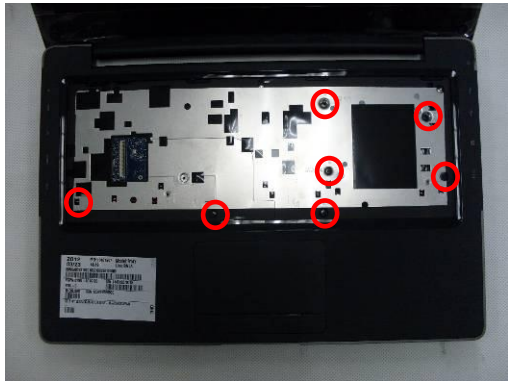
1. Install the bottom case.



2. Secure 4 screws (M2\*5) & 4 screws (M2\*4) on bottom case.



3. Take the protection coating away and secure 7 screws (M2\*4) on top case.



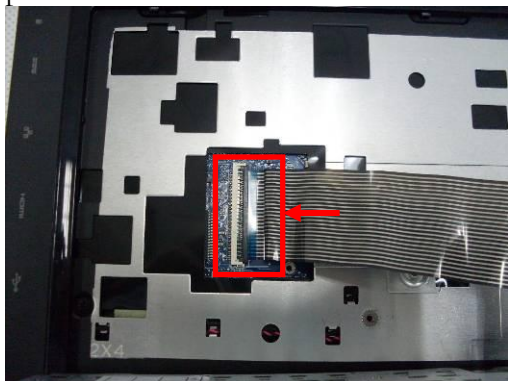
**KEYBOARD  
MODULE**

## Keyboard Module

The illustrations below show how to assemble the Keyboard module into the notebook.

### Keyboard Module Assembly

1. Connect the keyboard FPC with motherboard and install the keyboard into keyboard plate.



2. Press the keyboard down to lock 6 latches (Esc, F5, F11, Del, Tab, Home) on keyboard module.

