

Chapter

1

Disassembly Procedure

Please follow the information provided in this section to perform the complete disassembly procedure of the notebook. Be sure to use proper tools.

C15B Notebook consists of various modules. This chapter describes the procedures for the complete notebook disassembly. In addition, the detailed disassembly procedure of individual modules will be provided for your service needs.

The disassembly procedure consists of the following removal steps:

- Battery
- Bottom Door
- ODD Module
- Memory
- HDD Module
- WLAN Card
- Thermal Module
- CPU
- Keyboard
- Top Case Module
- Touchpad FFC
- Power Board FFC
- Power Board
- IO Board FFC
- IO Board
- Motherboard
- Bottom Case
- LCD Bezel
- Camera

- LCD Panel
- LVDS Cable

BATTERY

Battery

The illustrations below show how to remove the battery from the notebook.

Remove Battery

1. Shut down the operating system, close the LCD panel, turn over the notebook and place it on a clean platform.



2. Slide the left battery knob to unlock the latch.



3. Slide the right battery knob to unlock the spring latch, simultaneously, push the battery pack forward to remove it.



BOTTOM
DOOR

Bottom Door

The illustration below shows how to remove the bottom door from the notebook.

Remove Bottom Door

1. Remove 3 screws from the bottom door.



2. Use a finger to lift the upper edge of bottom door.



3. Lift to separate the bottom door from the bottom case.



ODD Module

The illustrations below show how to remove the ODD module from the notebook.

ODD

MODULE

Remove ODD Module

1. Pull the ODD module out from its housing.



2. Apply a force shown in below figure to separate the ODD bezel from the drive.



3. Remove 2 screws to separate the ODD bracket from the drive.



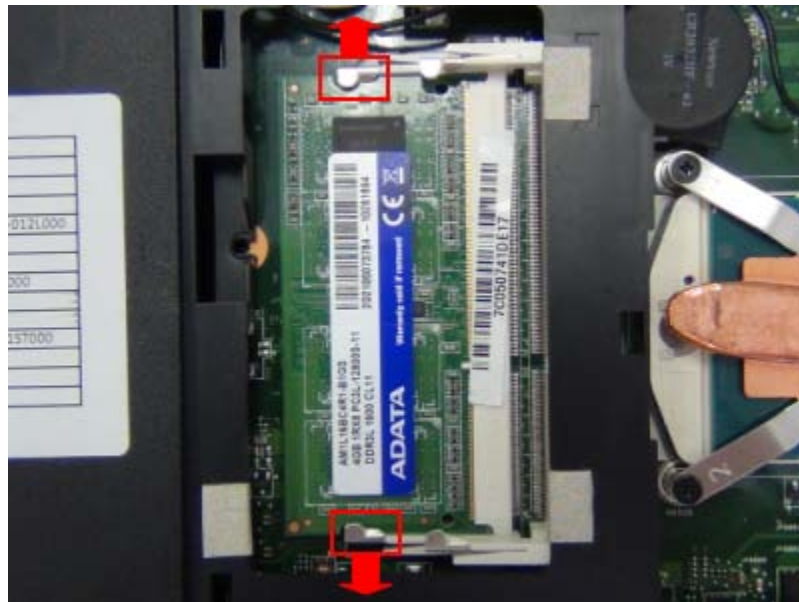
MEMORY

Memory

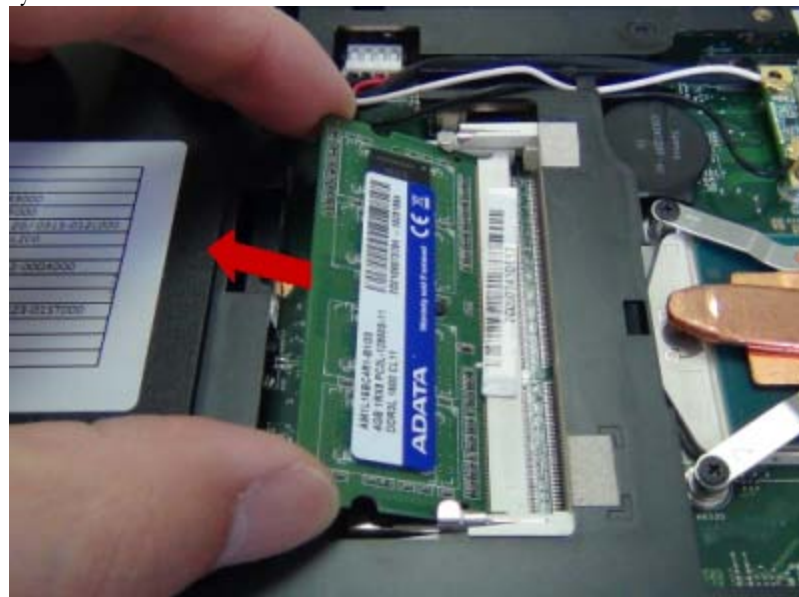
The illustration below shows how to remove the memory from the notebook.

Remove Memory

1. Pull 2 socket latches outward until the memory upsprings.



2. Pull the memory out from its socket.



HDD

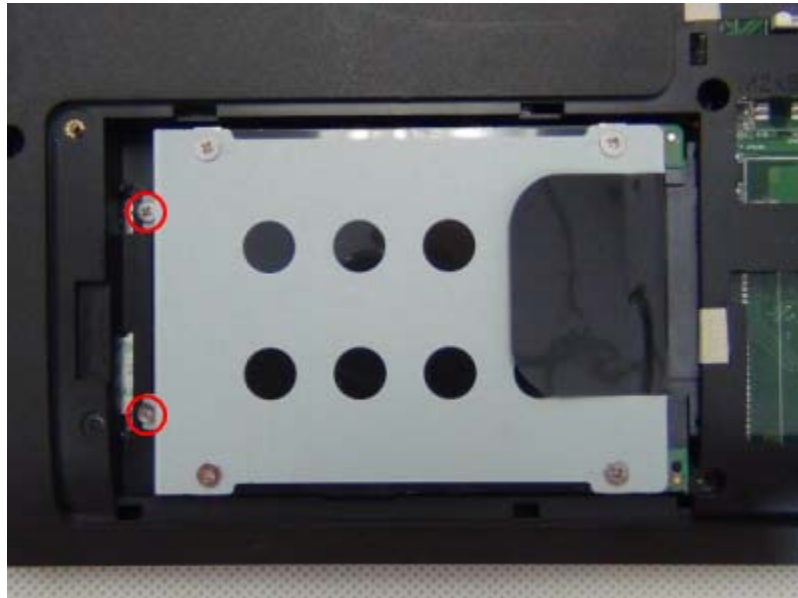
MODULE

HDD Module

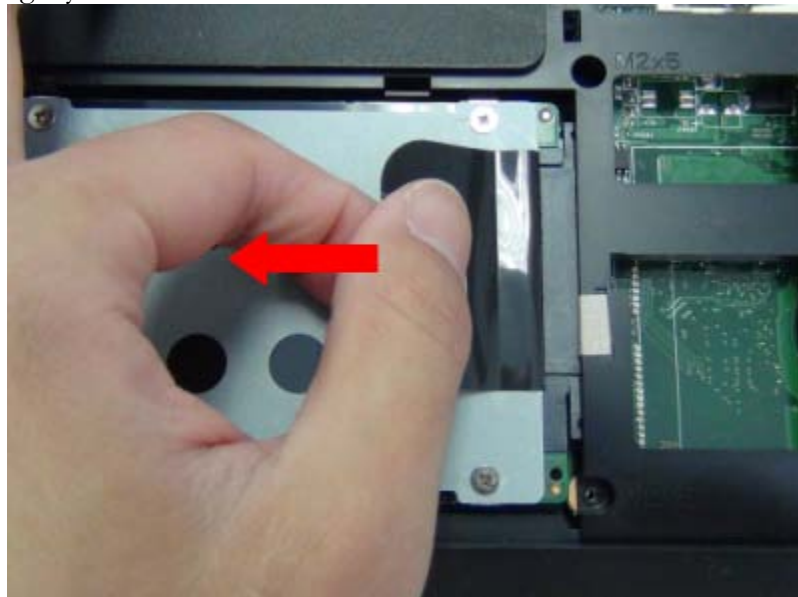
The illustrations below show how to remove the HDD module from the notebook.

Remove HDD Module

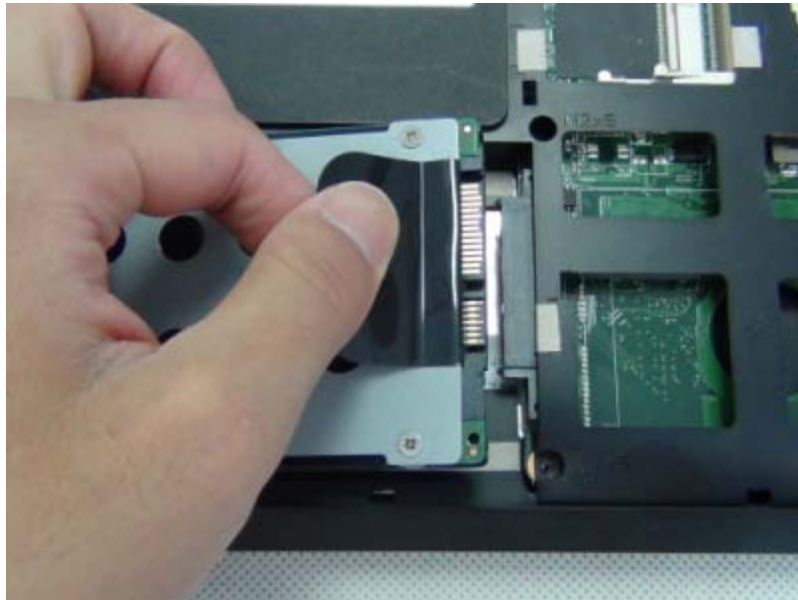
1. Remove 2 screws from the HDD bracket.



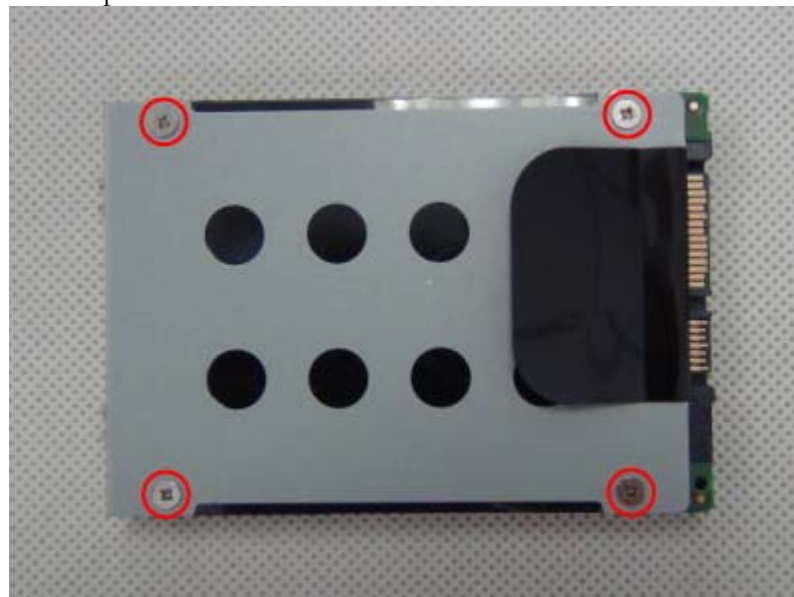
2. Pull the handling mylar left to disconnect the HDD from the motherboard.



3. Lift to remove the HDD module.



4. Remove 4 screws to separate the HDD bracket from the drive.



WLAN CARD

WLAN Card

The illustration below shows how to remove the WLAN card from the notebook.

Remove WLAN Card

1. Disconnect the antenna cables from the WLAN card.



2. Remove 1 screw from the WLAN card.



3. Pull the WLAN card out from its socket.



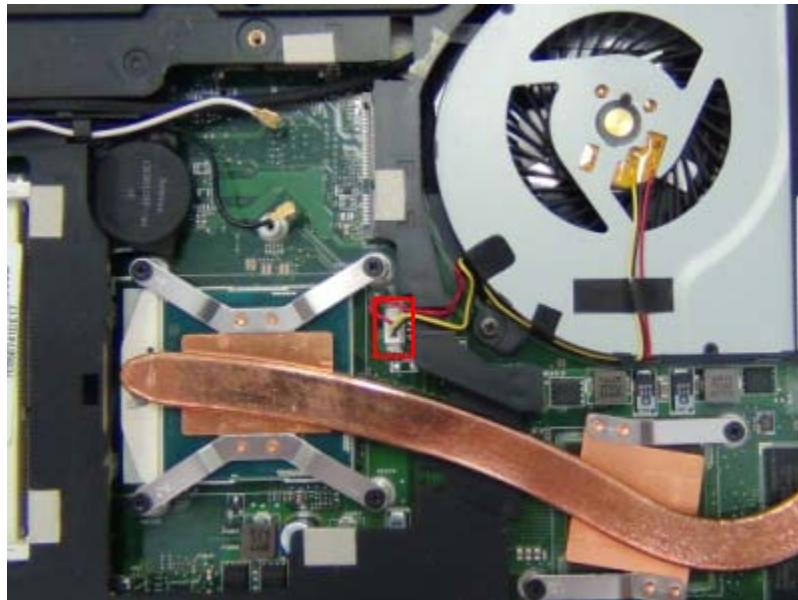
THERMAL
MODULE

Thermal Module

The illustration shows how to remove the thermal module from the notebook.

Remove Thermal Module

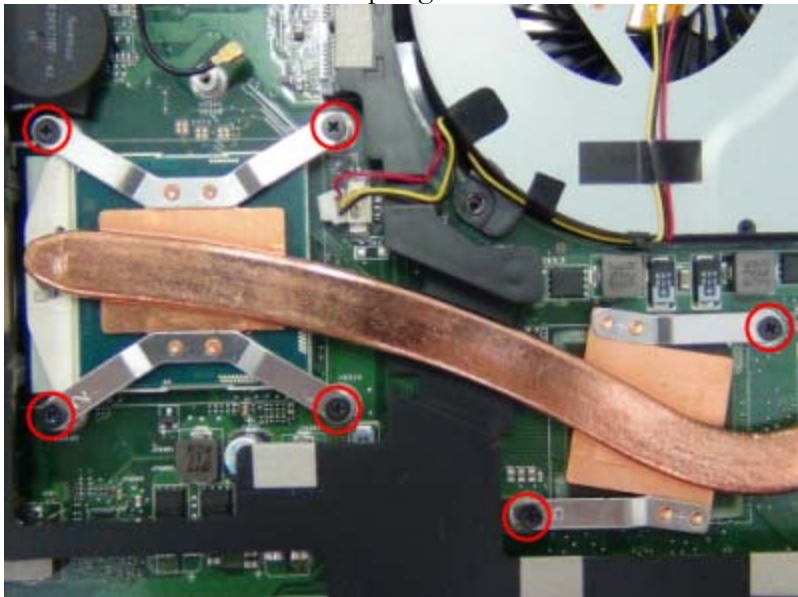
1. Disconnect the fan cable from the motherboard.



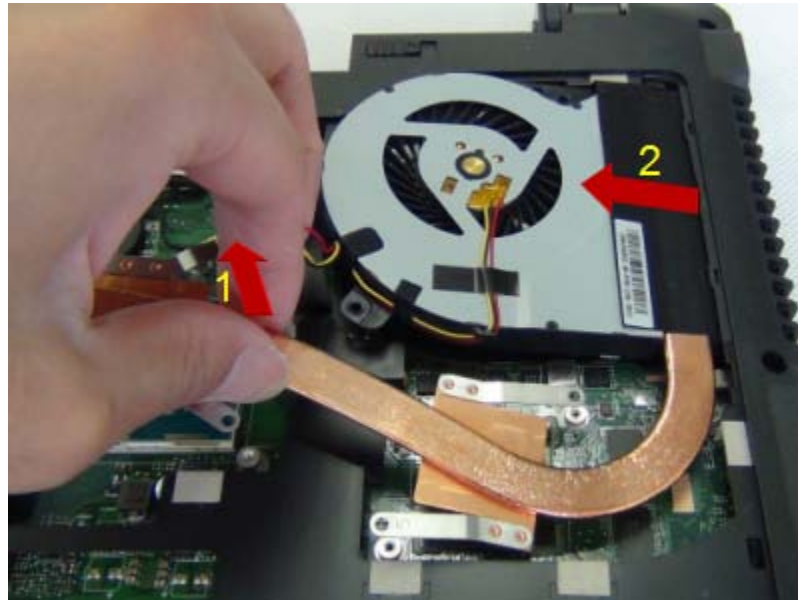
2. Remove 2 screws from the fan.



3. Remove 6 screws from the thermal block springs.



4. Lift to remove the thermal module.



C P U

CPU

The illustrations below show how to remove the CPU from the notebook.

Remove CPU

1. Use a Torx screwdriver to rotate the lock screw of CPU socket counterclockwise on 180 degrees.





2. Lift to remove the CPU.



Keyboard

The illustrations below show how to remove the keyboard from the notebook.

Remove Keyboard

1. Remove 1 screw from the bottom case.



2. Turn over the notebook and open the LCD panel. Use a plastic pry slice to release the lock tongue of top case.



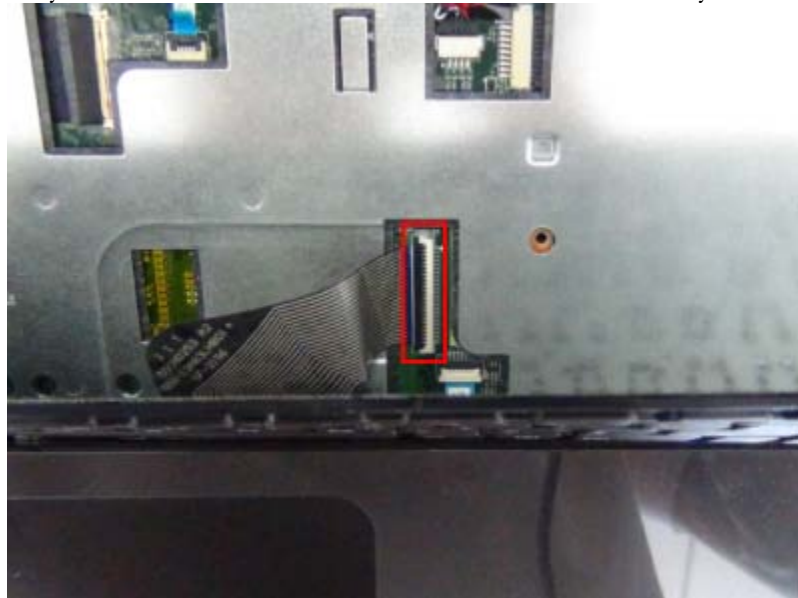
3. Release all lock tongues of top case.



4. Lift the upper edge of keyboard to reveal the keyboard connector.



5. Disconnect the keyboard cable from the motherboard and remove the keyboard.



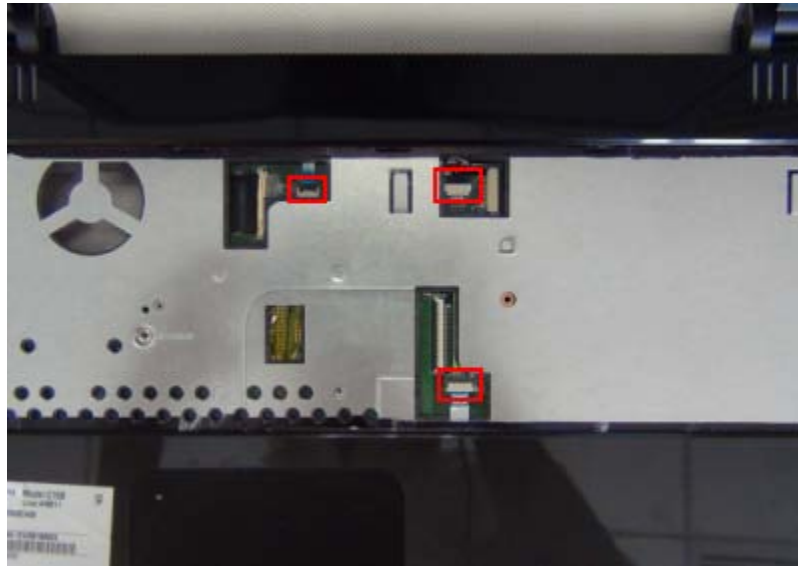
Top Case Module

TOP CASE MODULE

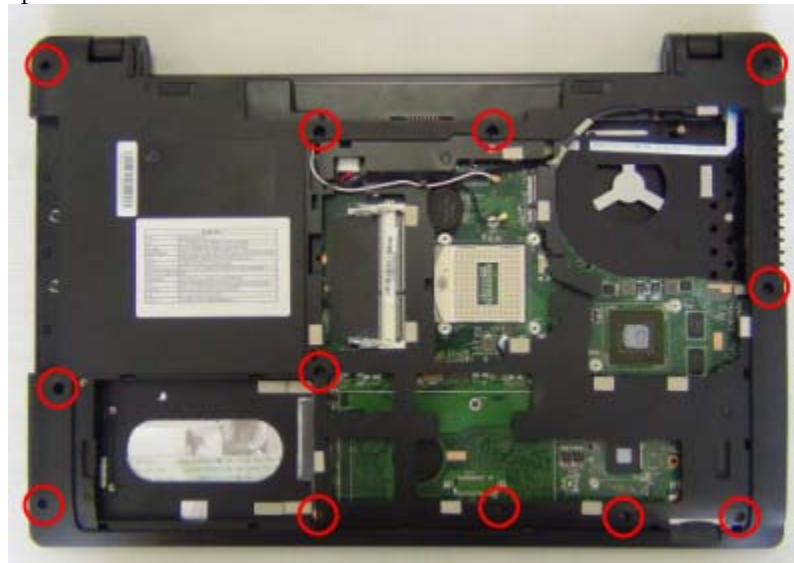
The illustrations below show how to remove the top case module from the notebook.

Remove Top Case Module

1. Disconnect the power board FFC, touchpad FFC and speaker cable from the motherboard.



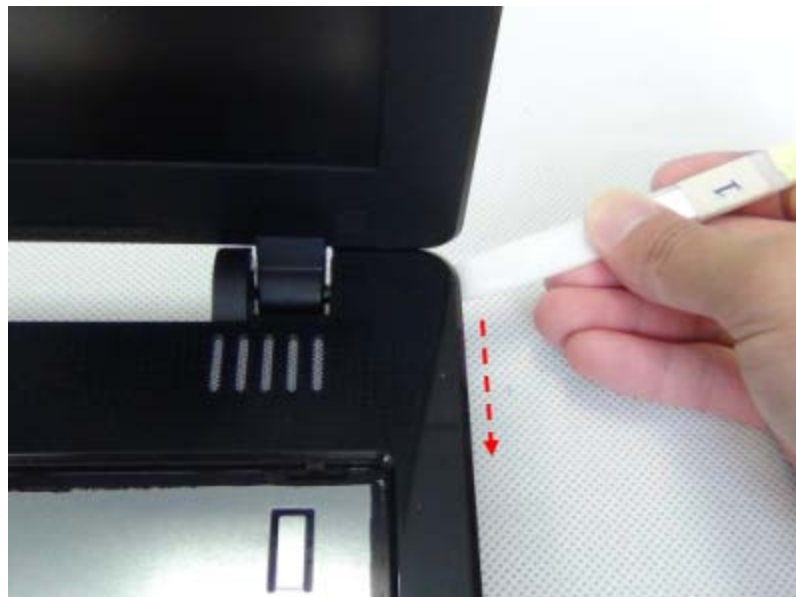
2. Close the LCD panel and turn over the notebook. Remove 12 screws from the bottom case.

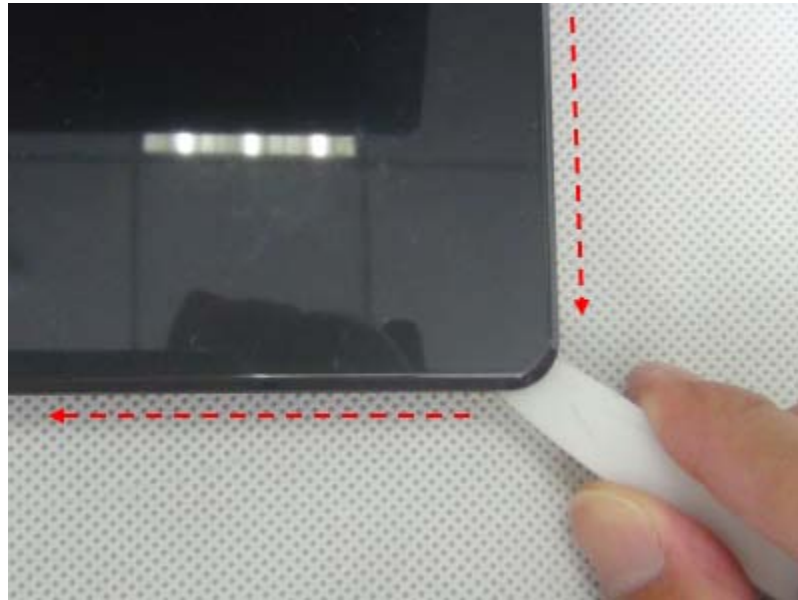


3. Turn over the notebook and open the LCD panel. Remove 1 screw from the top case.



4. Use a plastic pry slice to insert to the gap between top case and bottom case, pry the top case edges to release all latches.





5. Lift to separate the top case module from the bottom case.



TOUCHPAD
FFC

Touchpad FFC

The illustration below shows how to remove the touchpad FFC from the notebook.

Remove Touchpad FFC

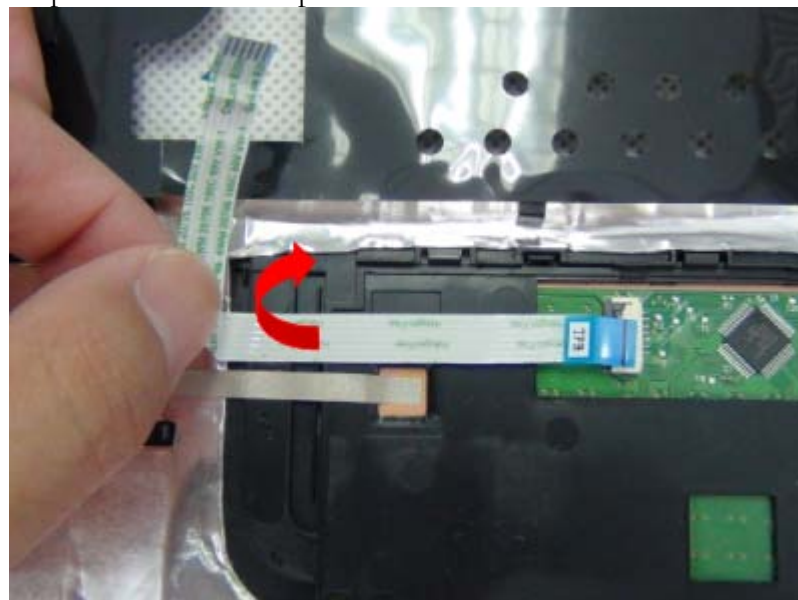
1. Turn over the top case module. Disconnect the touchpad FFC from the touchpad.



2. Pull up the fixing mylar from the touchpad FFC.



3. Tear off the touchpad FFC from the top case.



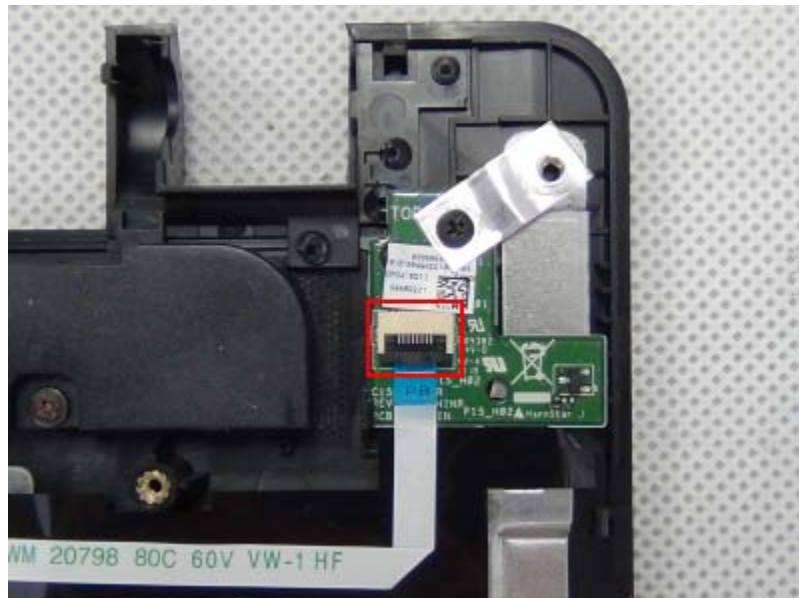
POWER
BOARD FFC

Power Board FFC

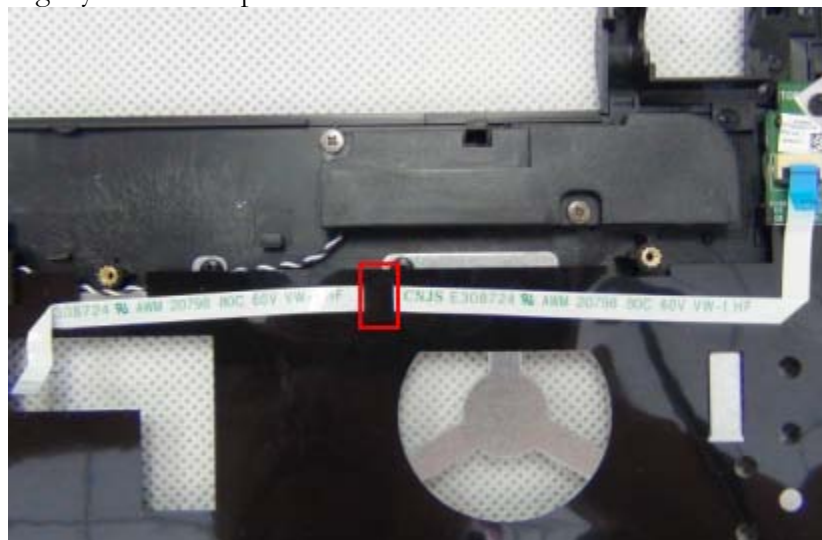
The illustration below shows how to remove the power board FFC from the notebook.

Remove Power Board FFC

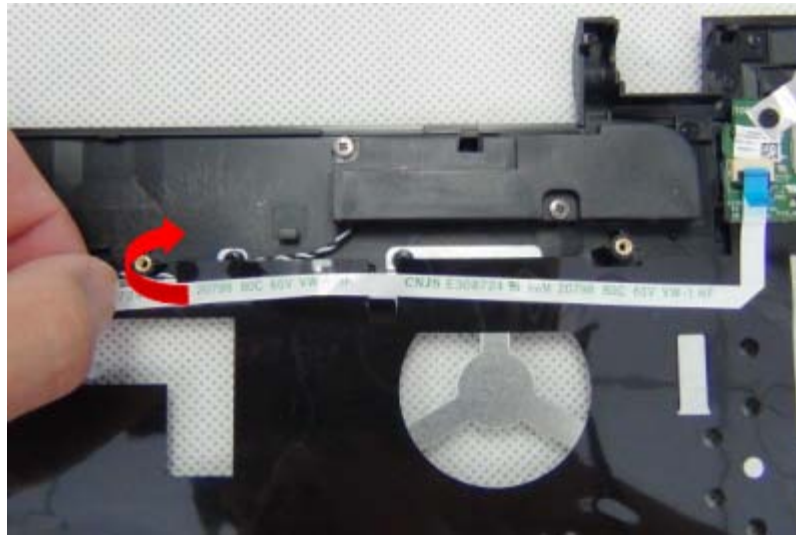
1. Disconnect the power board FFC from the power board.



2. Pull up the fixing mylar from the power board FFC.



3. Tear off the power board FFC from the top case.



P O W E R
B O A R D

Power Board

The illustration below shows how to remove the power board from the notebook.

Remove Power Board

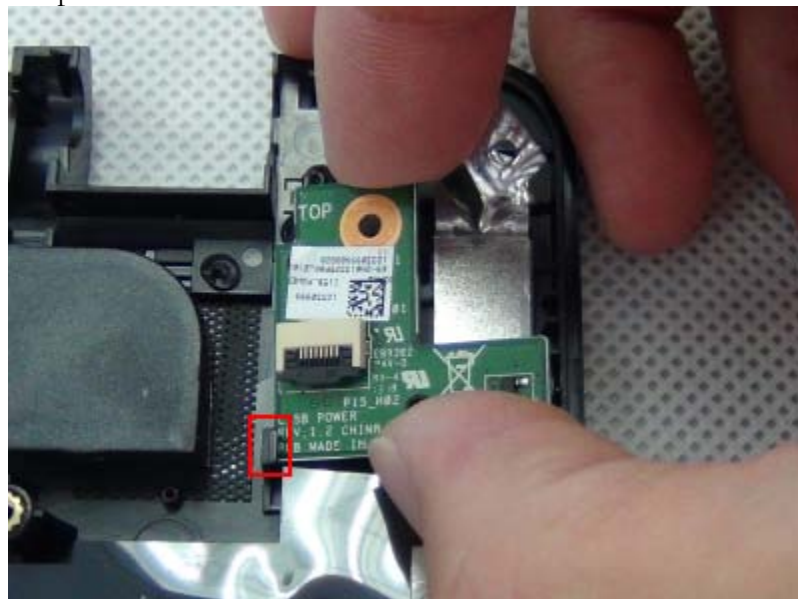
1. Remove 1 screw from the power board.



2. Pull up the Aluminium foil from the power board.



3. Lift to remove the power board.



IO BOARD
FFC

IO Board FFC

The illustration below shows how to remove the IO board FFC from the notebook.

Remove IO Board FFC

Disconnect the IO board FFC from the motherboard and IO board.



IO BOARD

IO Board

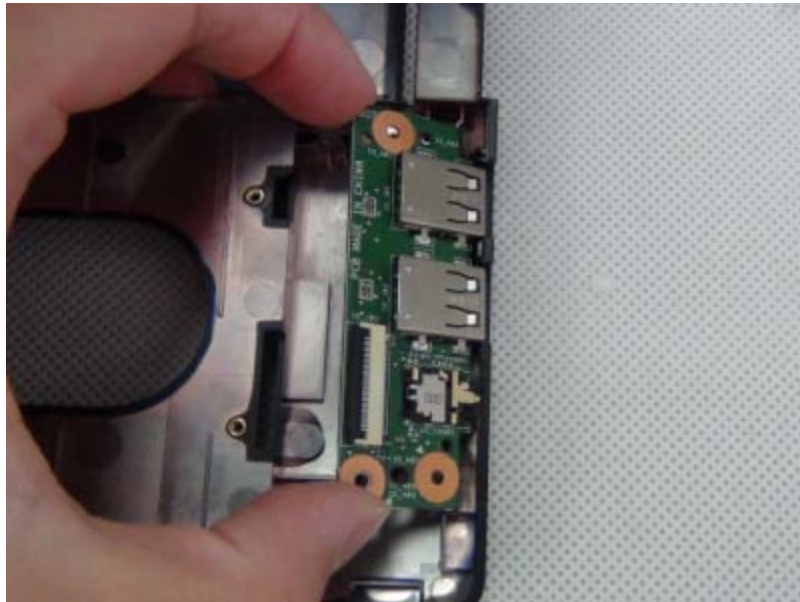
The illustration below shows how to remove the IO board from the notebook.

Remove IO Board

1. Remove 1 screw from the IO board.



2. Remove the IO board from the bottom case.



Motherboard

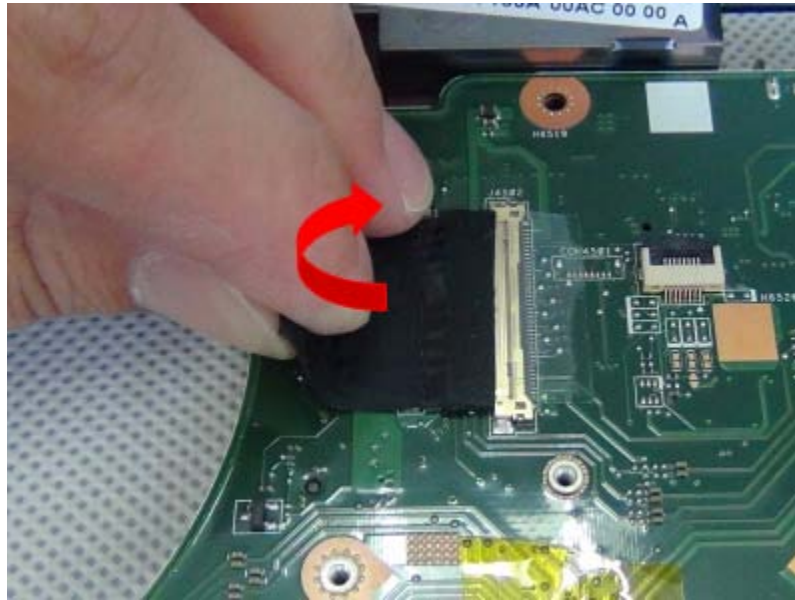
The illustrations below show how to remove the motherboard.

Remove Motherboard

1. Close the LCD panel and turn over the notebook. Disconnect the DC in cable from the motherboard.



2. Turn over the notebook and open the LCD panel. Pull up the acetate fabric of LVDS cable from the motherboard.



3. Pull up the transparent mylar of LVDS cable from the motherboard.



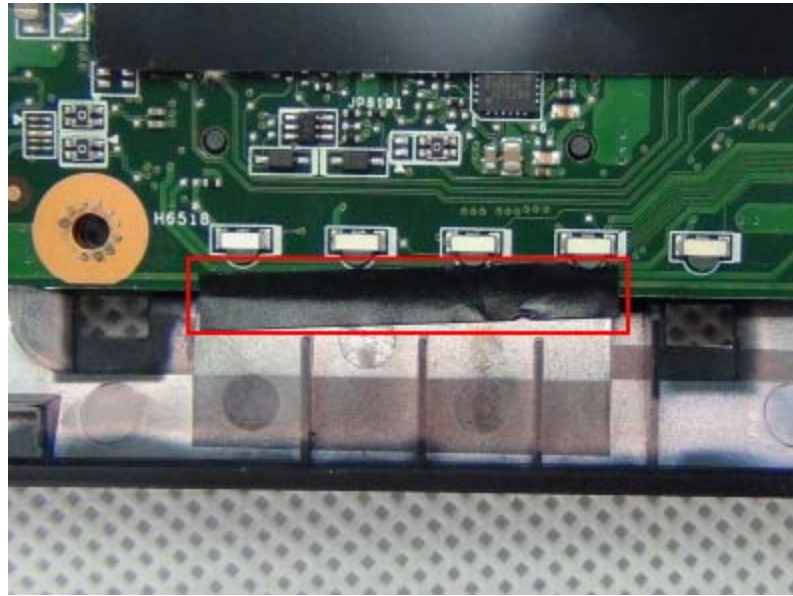
4. Disconnect the LVDS cable from the motherboard.



5. Disconnect the camera cable from the motherboard.



6. Tear off the LED mylar from the motherboard.



7. Remove 2 screws from the motherboard.



8. Lift to remove the motherboard.



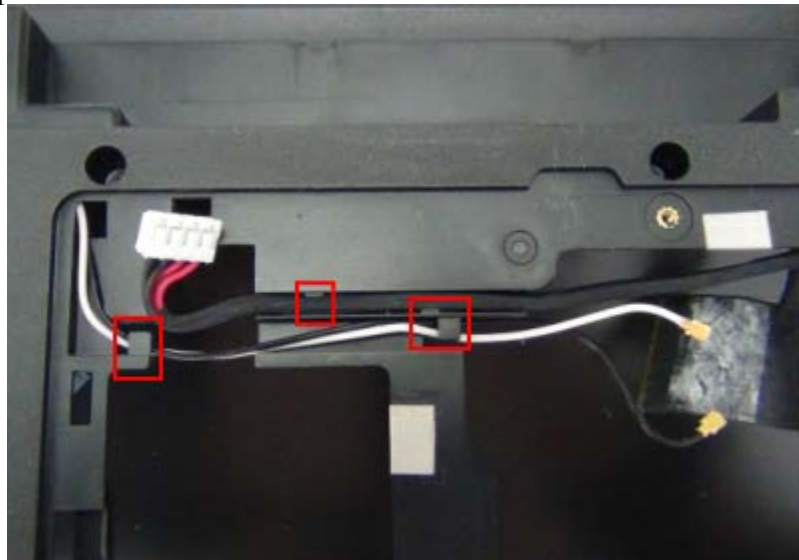
BOTTOM CASE

Bottom Case

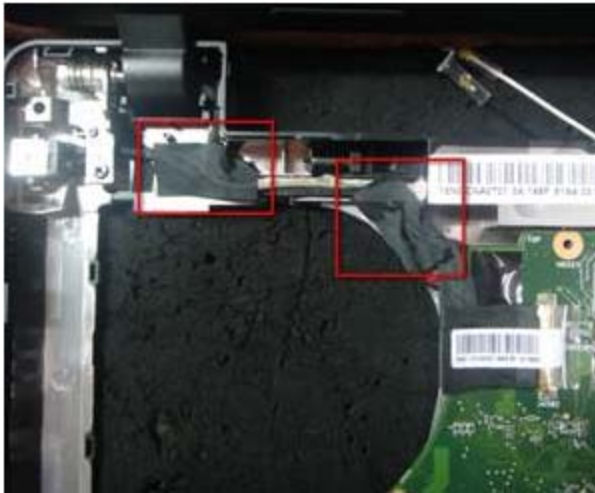
The illustrations below show how to remove the bottom case.

Remove Bottom Case

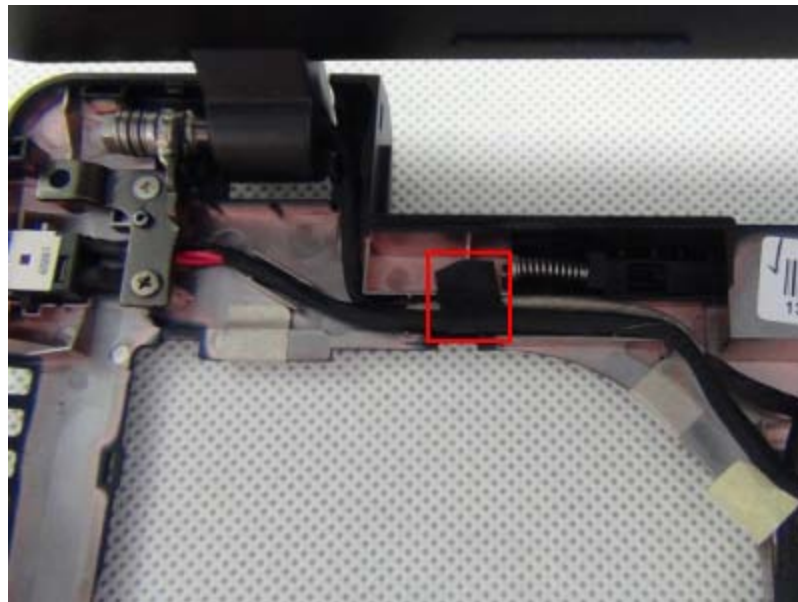
1. Close the LCD panel and turn over the notebook. Pull out the DC in cable and WLAN antenna cables from the position hooks of bottom case.



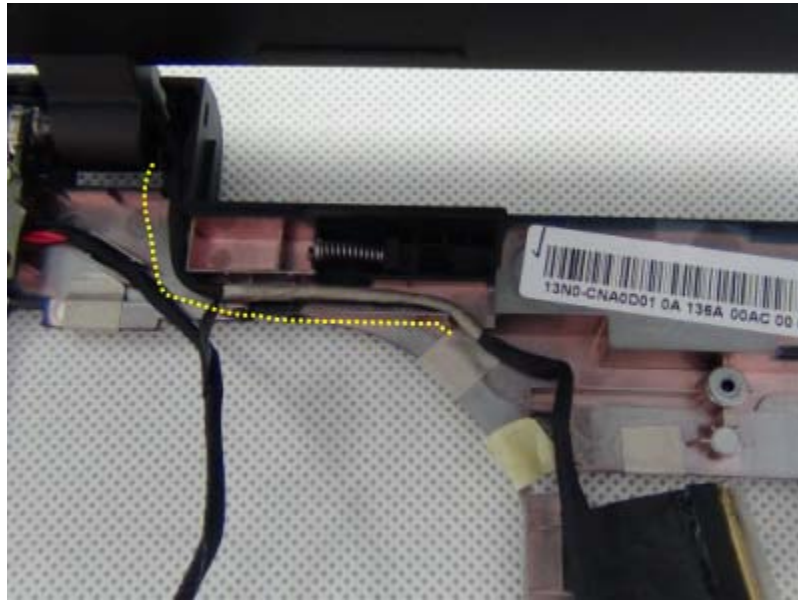
2. Turn over the notebook and open the LCD panel. Tear off 2 pieces of acetate fabric from the DC in cable and LVDS cable.



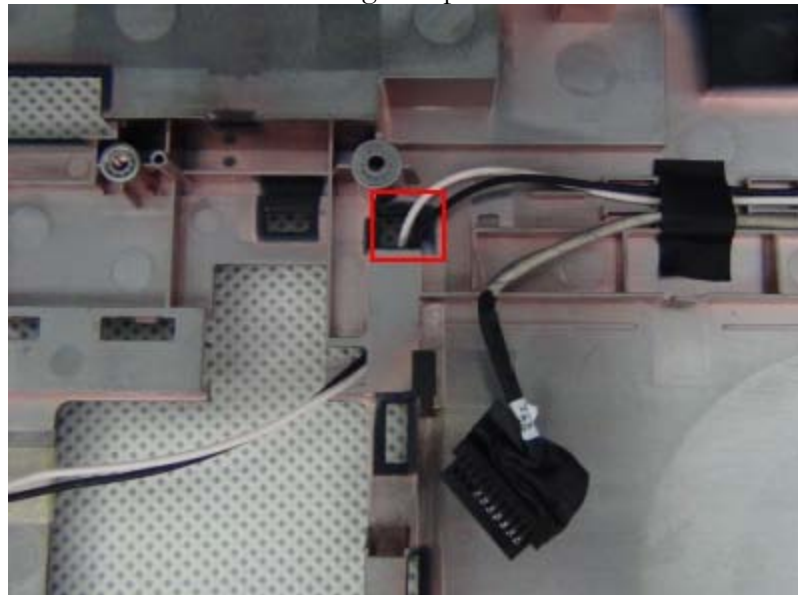
3. Tear off the acetate fabric of DC in cable from the bottom case.



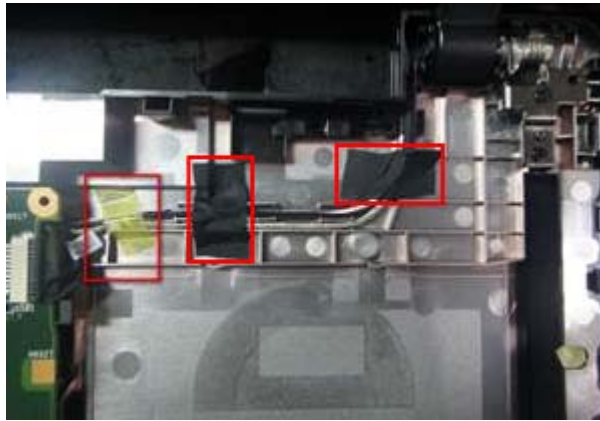
4. Pull out the LVDS cable from the position groove of bottom case.



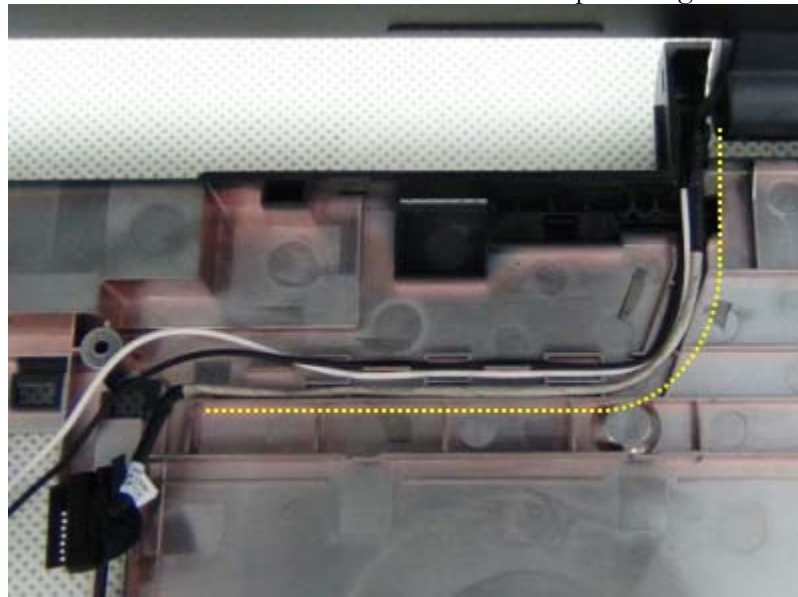
5. Pull to pass the WLAN antenna cables through the position hole of bottom case.



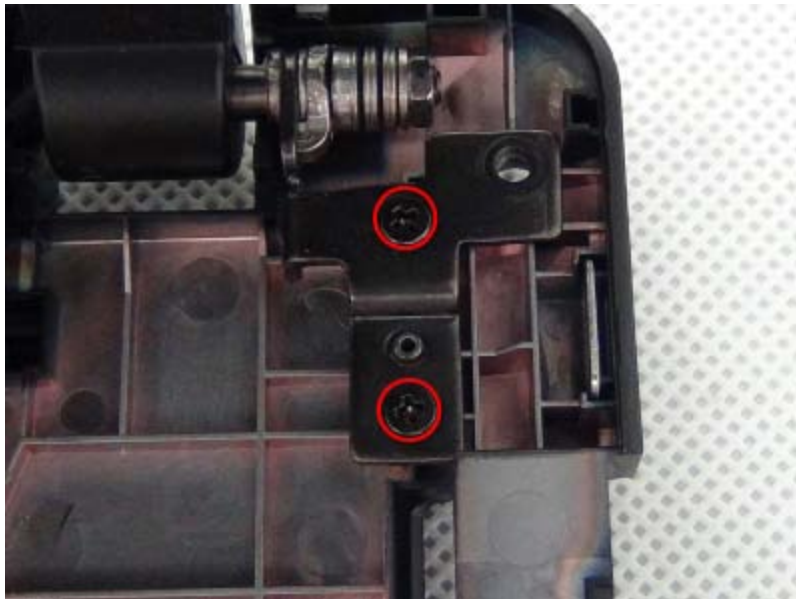
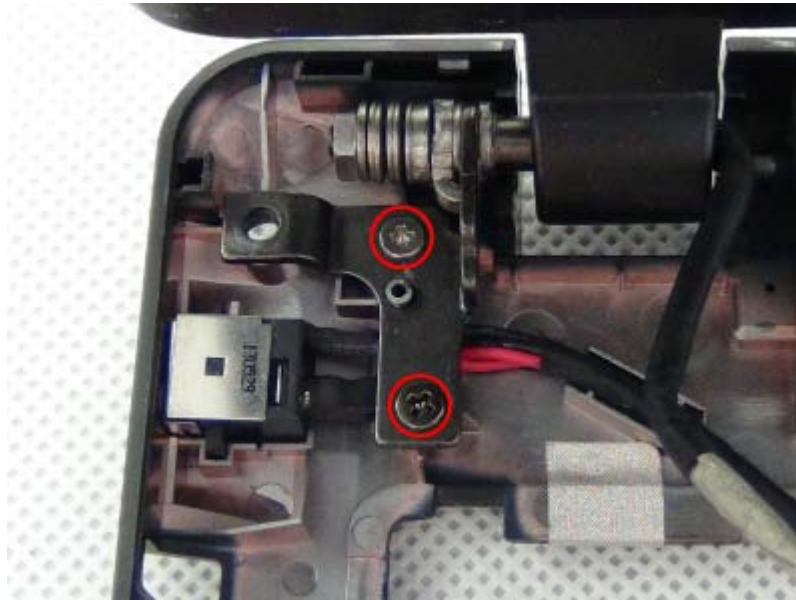
6. Tear off 1 piece of adhesive tape and 2 pieces of acetate fabric from the bottom case.



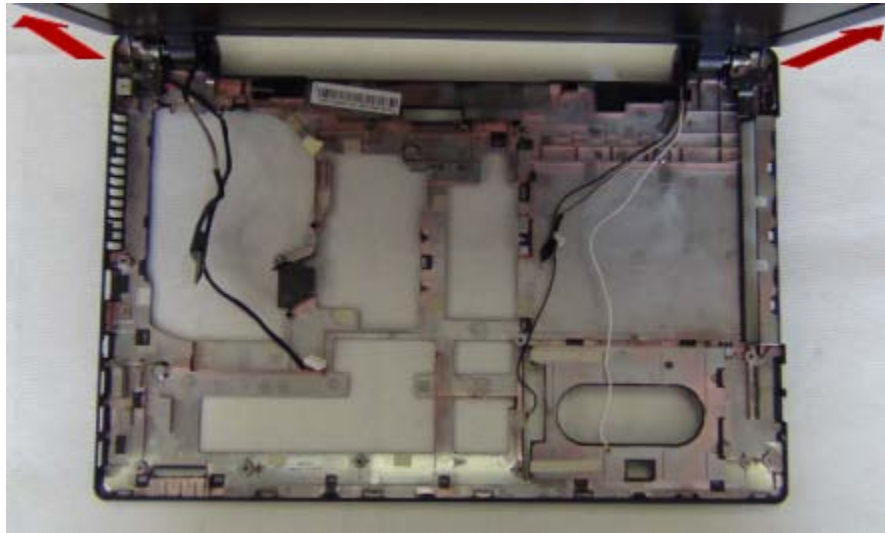
7. Pull out the camera cable and WLAN antennae cables from the position grooves of bottom case.



8. Remove 4 screws from the LCD hinges.



9. Lift to separate the LCD module from the bottom case.



L C D B E Z E L

LCD Bezel

The illustration below shows how to remove the LCD bezel from the notebook.

Remove LCD bezel

1. Use a pair of tweezers to tear off 2 pieces of screw mylar from the LCD bezel.



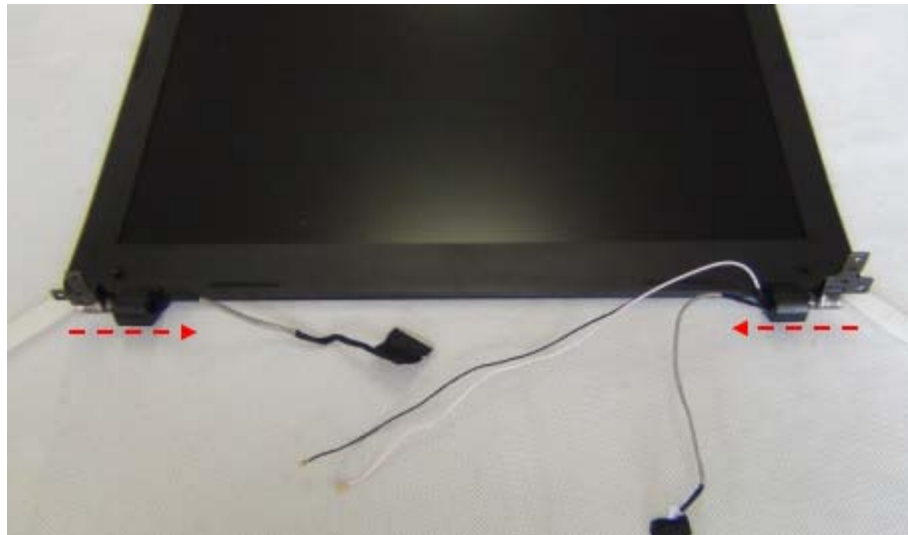


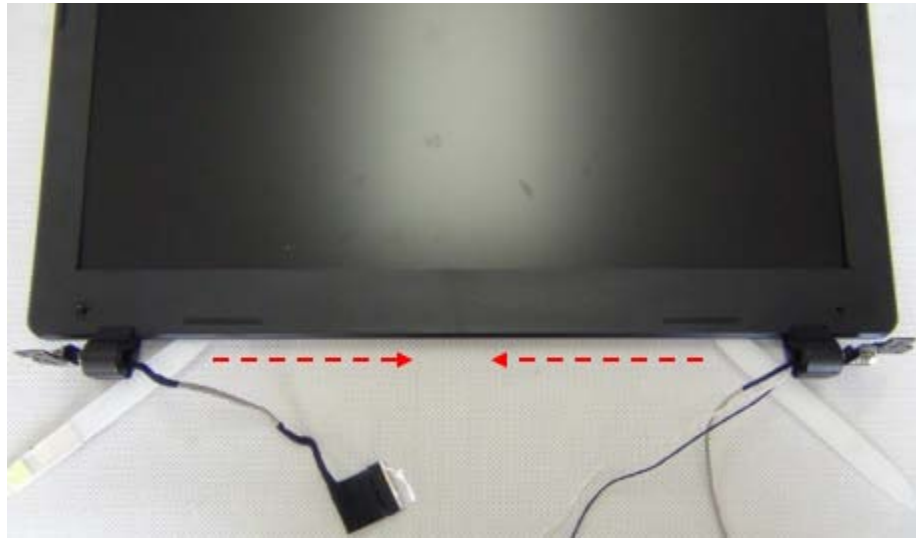
2. Remove 2 screws from the LCD bezel.

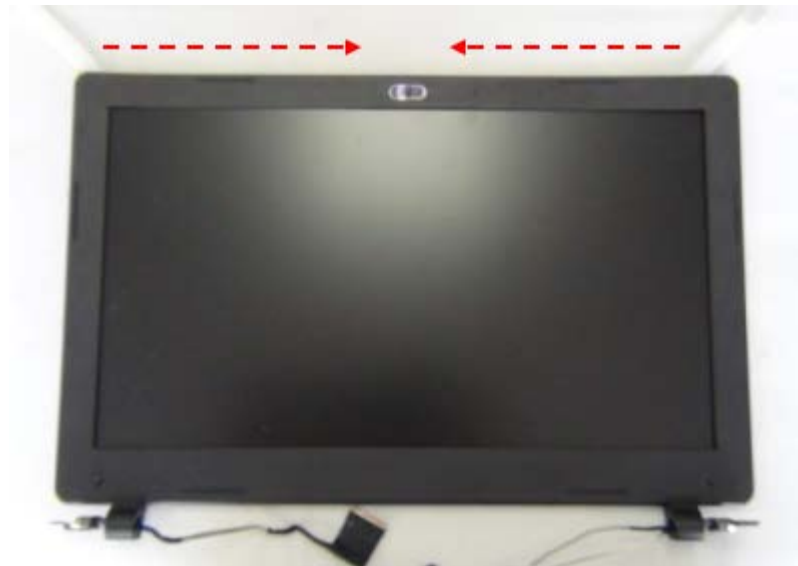




3. Use 2 plastic pry slices to insert to the gap between LCD bezel and LCD cover, pry the bezel edges to release all latches.







4. Lift to separate the LCD bezel from the LCD cover.



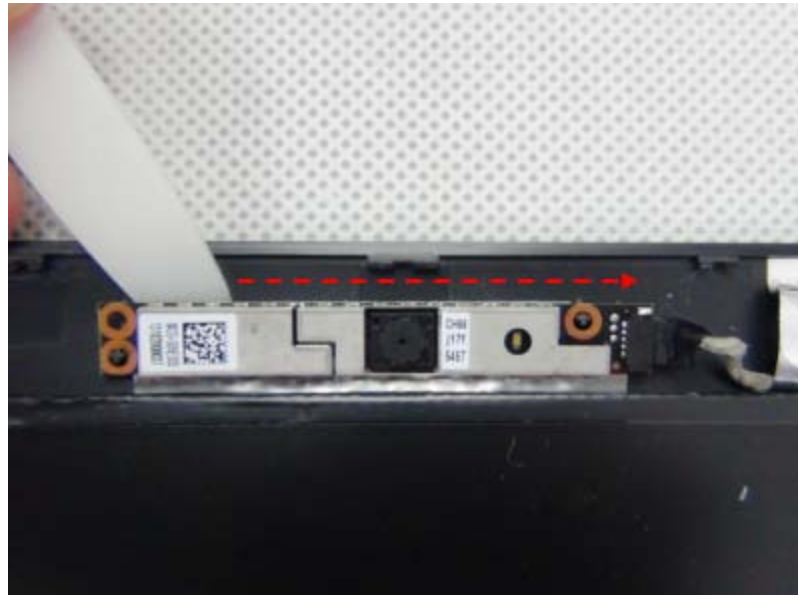
C A M E R A

Camera

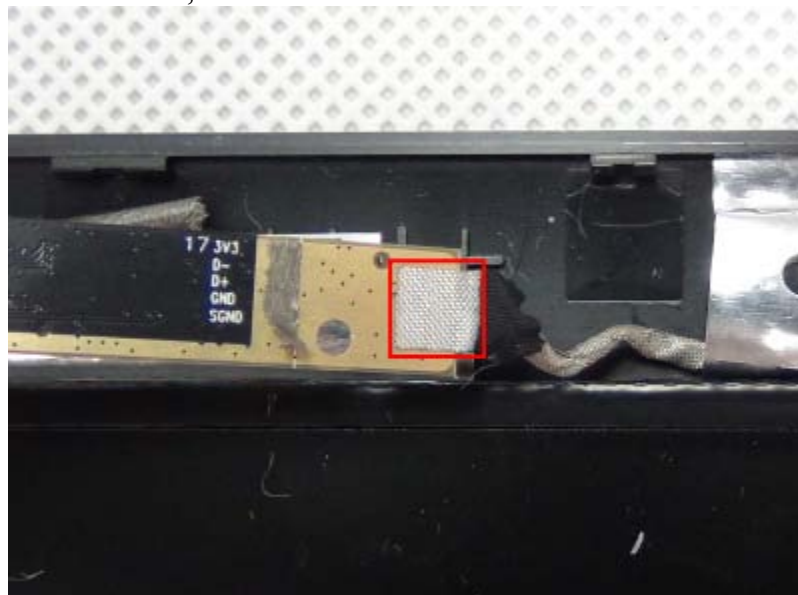
The illustration below shows how to remove the camera from the notebook.

Remove Camera

1. Use a plastic pry slice to separate the camera module from the LCD cover.



2. Turn over the camera module, tear off the conductive fabric of camera cable from the camera.



3. Disconnect the camera module from the camera cable.



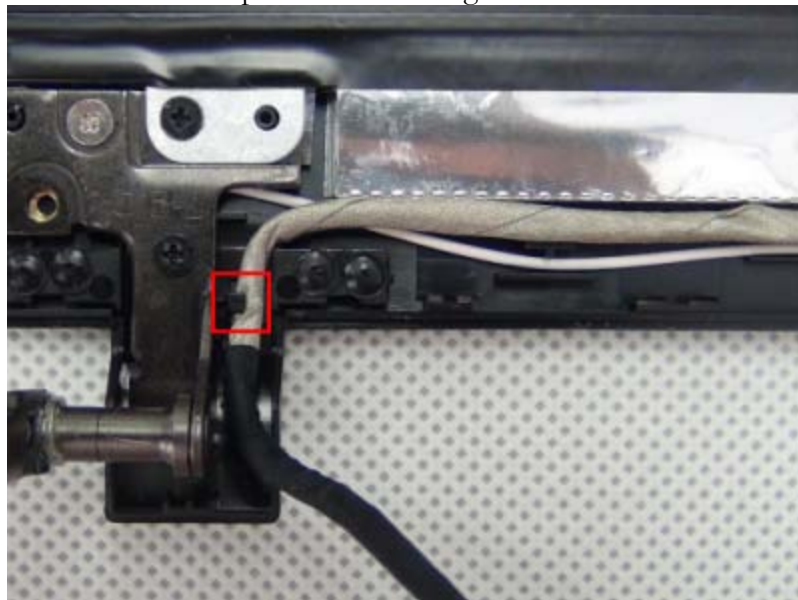
L C D P A N E L

LCD Panel

The illustration below shows how to remove the LCD panel from the notebook.

Remove LCD Panel

1. Pull out the LVDS cable from the position hook and groove of LCD cover.



2. Remove 4 screws from the metal feet of LCD panel.



3. Lift to remove the LCD panel.



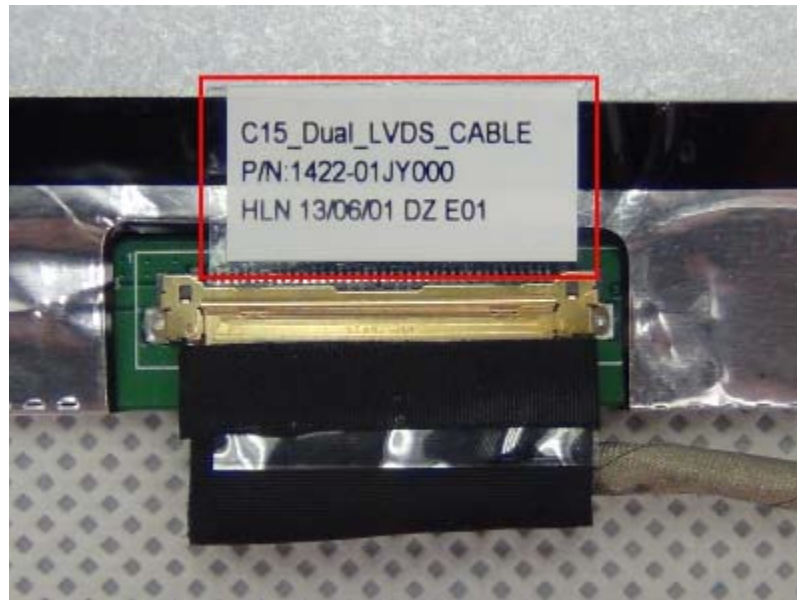
LVDS CABLE

LVDS Cable

The illustration below shows how to remove the LVDS cable from the notebook.

Remove LVDS Cable

1. Turn over the LCD panel, pull up the transparent mylar of LVDS cable from the LCD panel.



2. Disconnect the LVDS cable from the LCD panel.

