

Assembly Procedure

Please follow the information provided in this section to perform the complete assembly procedure of the notebook. Be sure to use proper tools described before.

After you have completed the previous chapter of complete disassembly, please follow this chapter to assemble the notebook back together. This chapter describes the procedures of the complete notebook assembly. In addition, in between procedures, the detailed assembly procedure of individual modules will be provided for your service needs.

The assembly procedure consists of the following steps:

- LCD Module
- Woofer Module
- Motherboard Module
- Top Case Module
- Keyboard Module
- CPU Module
- Thermal Module
- Wireless LAN Module
- Memory Module
- HDD Module
- ODD Module
- Battery Module

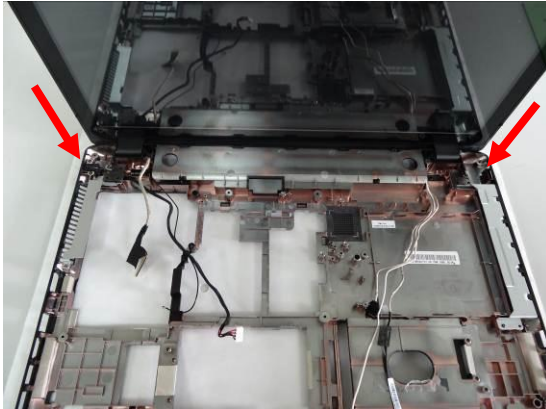
LCD
MODULE

LCD Module

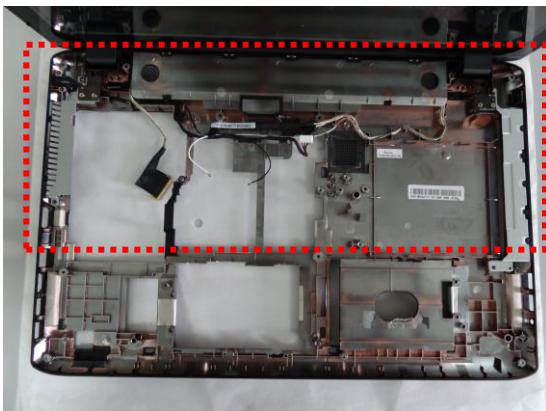
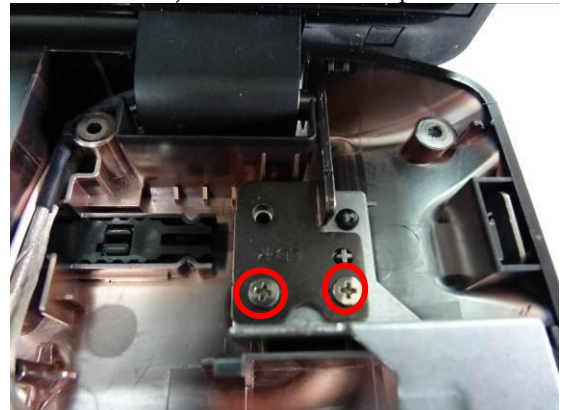
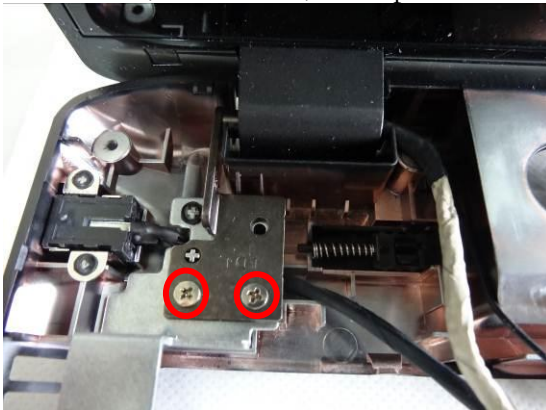
The illustrations below show how to install the LCD Module of the notebook.

LCD Module Assembly

1. Install the LCD module on the bottom case.



2. Fix 4 screws (M2.5*5) on LCD hinges. Then make sure all the cables (WLAN antennas, LVDS cable, DC-in cable, touch panel cable and camera cable) are in the correct position.



**W O O F E R
M O D U L E**

Woofer Module

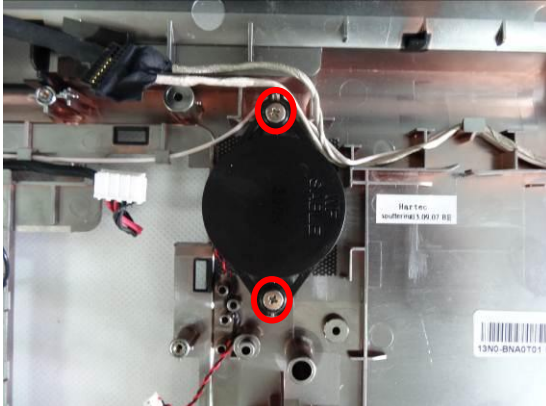
The illustrations below show how to assemble and install the Woofer Module of the notebook.

Woofer Module Assembly

1. Install the woofer module on the bottom case.



2. Fix 2 screws (M2*2+5.15) and make sure the woofer cable is in the correct position.

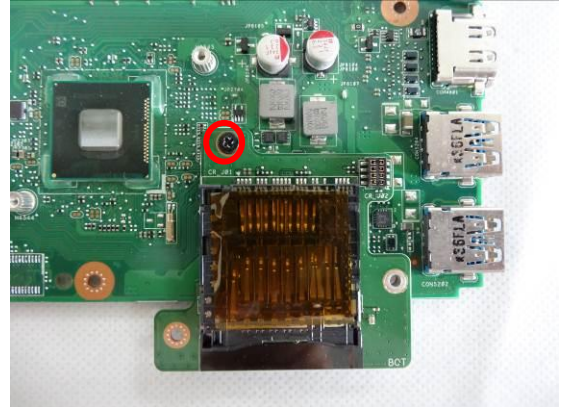


Motherboard Module

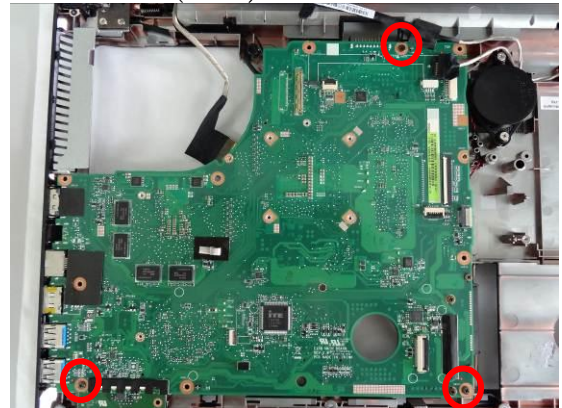
The illustrations below show how to assemble and install the Motherboard Module of the notebook.

Motherboard Module Assembly

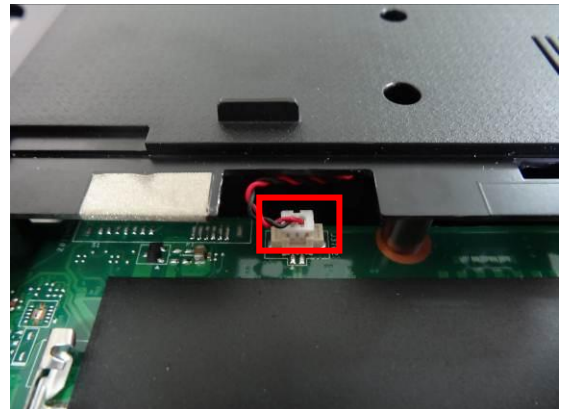
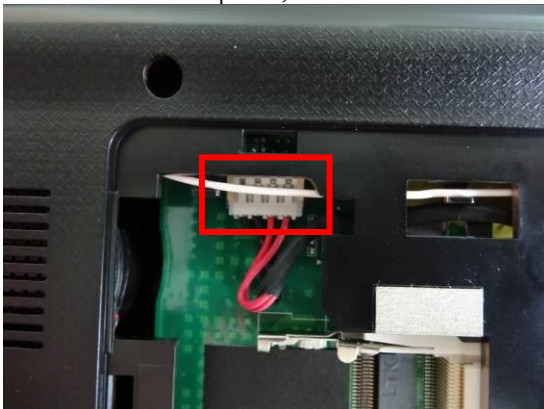
1. Install the card reader board and fix 1 screw (M2*3).



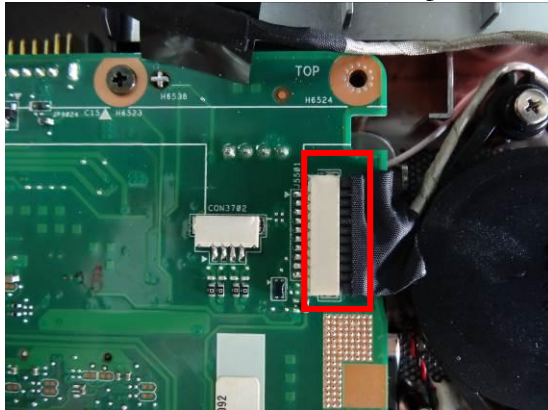
2. Place the motherboard in the bottom case and fix 3 screws (M2*6) on the motherboard.



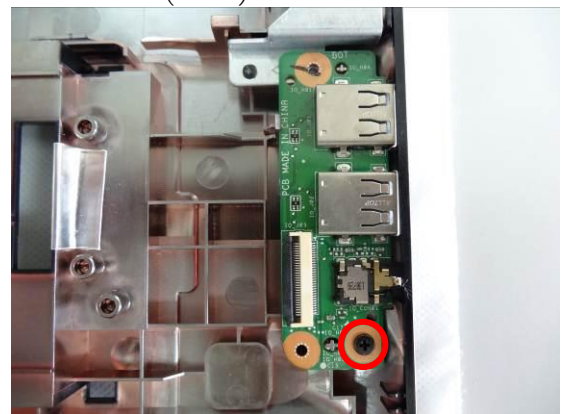
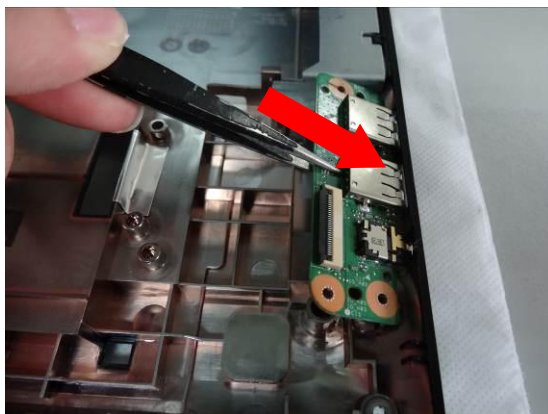
3. Close the LCD panel, turn over the notebook and connect the DC-in cable and woofer cable.



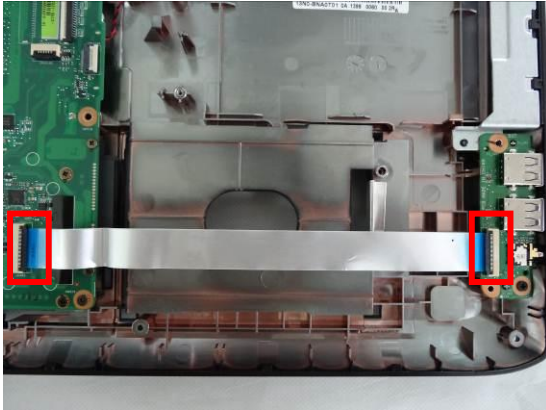
4. Connect the camera cable, touch panel cable and LVDS cable onto the motherboard.



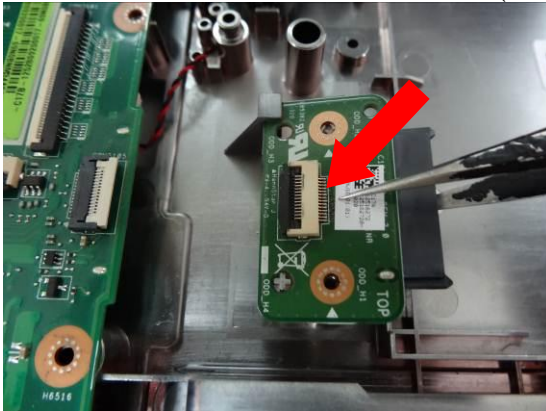
5. Install the IO board on the bottom case. Then fix 1 screw (M2*4) on the IO board.



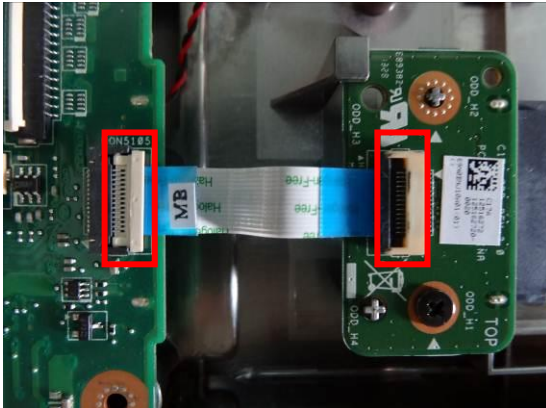
6. Connect IO board cable onto the motherboard and IO board.



7. Install the ODD board and fix 1 screw (M2*6).



8. Connect the ODD cable onto the motherboard and ODD board.



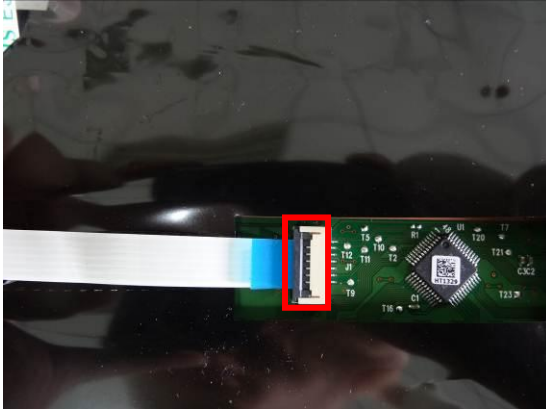
**TOP CASE
MODULE**

Top Case Module

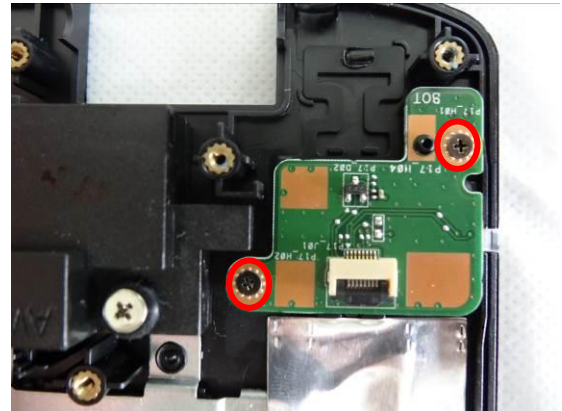
The illustrations below show how to assemble and install the Top Case Module of the notebook.

Top Case Module Assembly

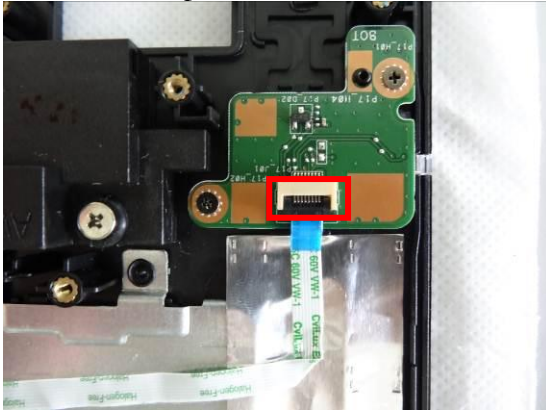
1. Connect the touchpad cable onto the touchpad.



2. Install the power switch board on the top case, then fix 2 screws (M2*3) on the power switch board.



3. Connect the power board cable.



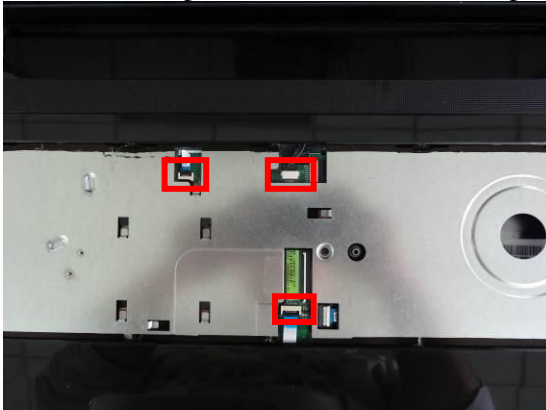
4. Install the top case module on the bottom case and press the four sides to fix it.



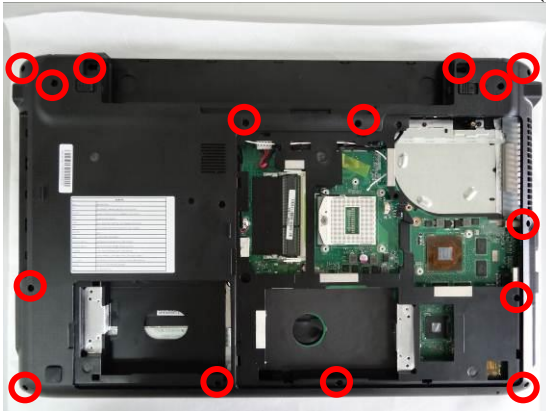
5. Fix 1 screw (M2*6) on top case.



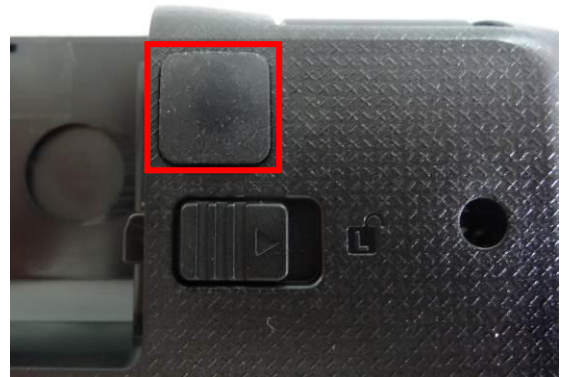
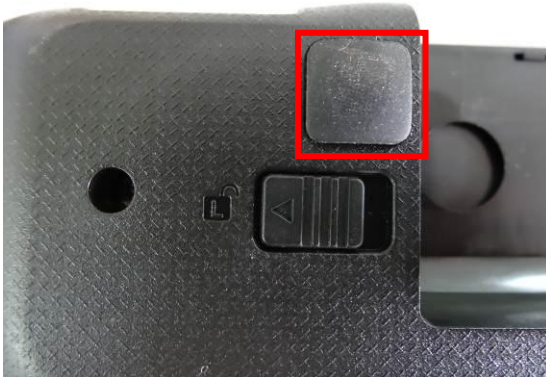
6. Connect the power switch board cable, speaker cable and touchpad cable on the MB.



7. Turn over the notebook and fix 15 screws (M2*6) on the bottom case.



8. Stick 2 rubbers on the bottom case.



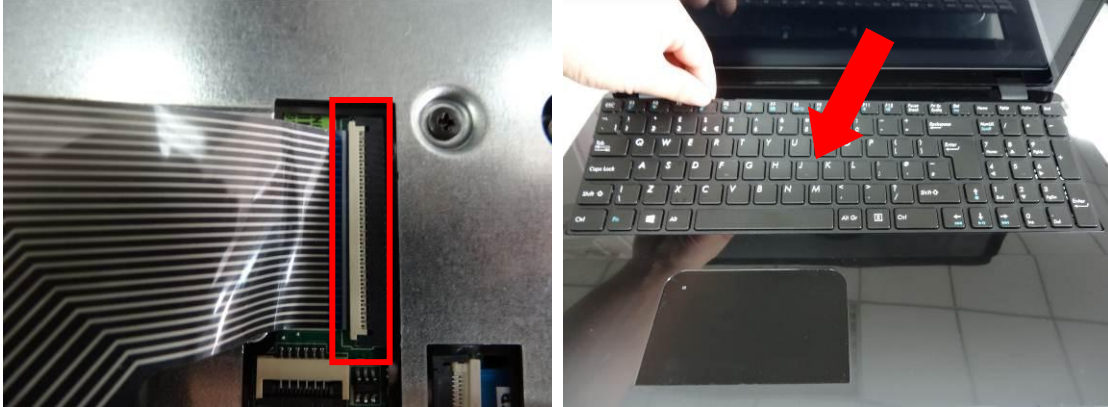
**KEYBOARD
MODULE**

Keyboard Module

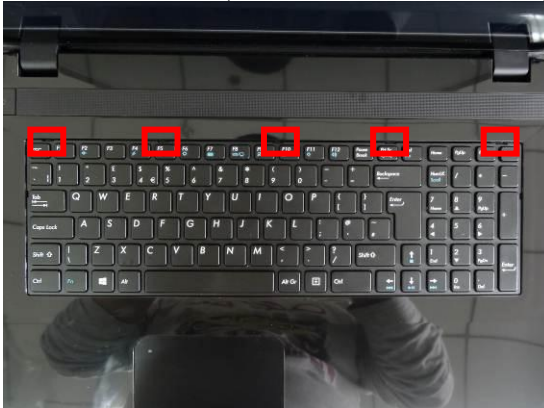
The illustrations below show how to assemble and install the Keyboard Module of the notebook.

Keyboard Module Assembly

1. Connect the keyboard FPC and install the key board on the top case.



2. Lock 5 latches (Esc, F5, F10, Prt Sc, End) on keyboard module to fix the keyboard.



3. Fix 1 screw (M2*6) on the bottom case.



**CPU
MODULE**

CPU Module

The illustrations below show how to assemble and install the CPU Module of the notebook.

CPU Module Assembly

1. Install the CPU module and use a single-slotted screwdriver to fix it. Turn the non-removable screw here 180 degrees counter-clockwise to secure the CPU.



**THERMAL
MODULE**

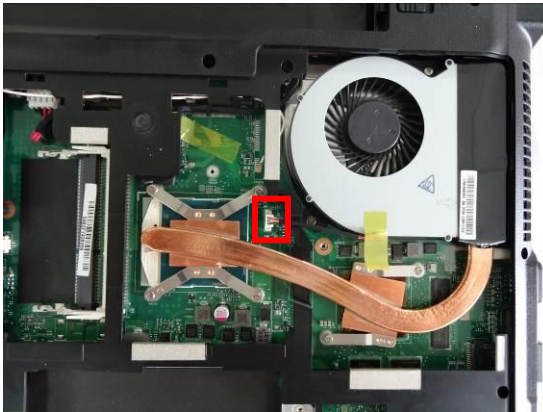
Thermal Module

The illustrations below show how to assemble and install the Thermal Module of the notebook.

Thermal Module Assembly

1. Install the thermal module. Then fix 2 screws (M2*4) and 6 screws (M2*3) on the thermal module and connect the fan cable onto the motherboard.





**WLAN
MODULE**

Wireless LAN Module

The illustration below shows how to assemble and install WLAN Module of the notebook.

Wireless LAN Module Assembly

1. Insert the wireless LAN card to the slot and fix 1 screw (M2*3) on it. Then connect the antennas with wireless LAN card.



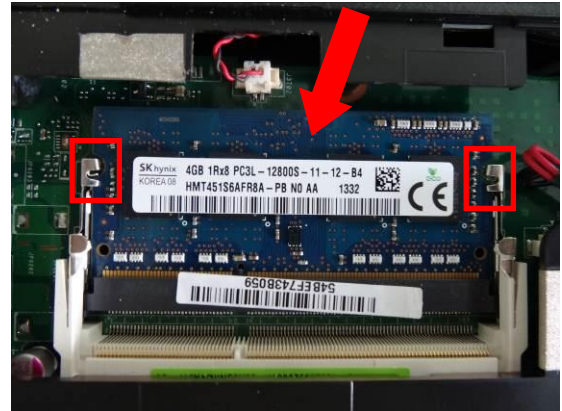
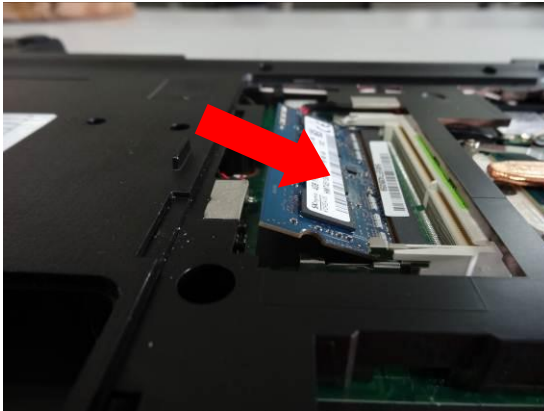
MEMORY
MODULE

Memory Module

The illustration below shows how to assemble and install Memory Module of the notebook.

Memory Module Assembly

1. Insert the memory module at the same 45° angles and press down until it clicks into the latches.



2. Insert another memory module at the same 45° angles and press down until it clicks into the latches.



3. Install the main door and fix 3 screws (M2*6).



HDD Module

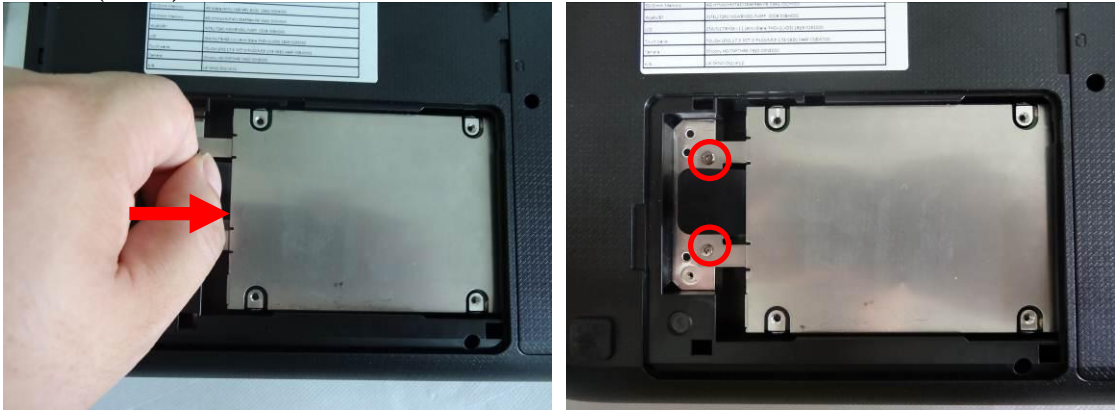
The illustrations below show how to assemble and install the HDD Module of the notebook.

HDD Module Assembly

1. Install HDD bracket on HDD module and fix 4 screws (M3*3) to fix it.



2. Install the hard disk module and pull it toward the direction of the arrow. Then fix 2 screws (M2*4) on HDD bracket.



3. Install the mini door on the bottom case and fix 1 screw (M2*6).



**ODD
MODULE**

ODD Module

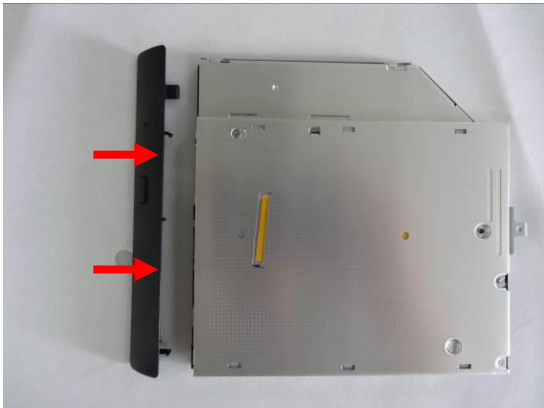
The illustrations below show how to assemble and install the ODD Module of the notebook.

ODD Module Assembly

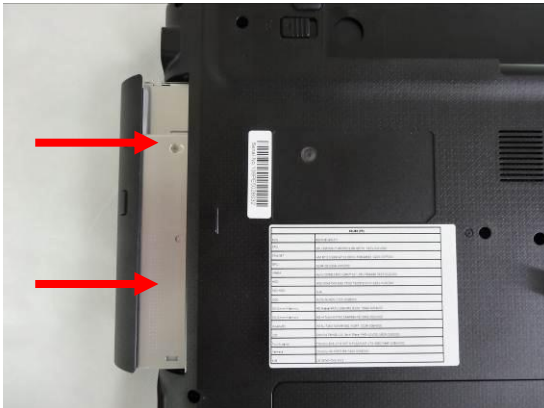
1. Install ODD bracket on the ODD module and fix 2 screws (M2*3) on ODD bracket.



2. Install ODD bezel on the ODD module.



3. Install the ODD module on the notebook and fix 1 screw (M2*6) to fix it.



**BATTERY
MODULE**

Battery Module

The illustration below shows how to install Battery Module of the notebook.

Battery Module Assembly

1. Install the battery and press it down .Lock the battery latch.

