



## Disassembly Procedure

*Please follow the information provided in this section to perform the complete disassembly procedure of the notebook. Be sure to use proper tools described before.*

**C**17B-Touch Notebook consists of various modules. This chapter describes the procedures for the complete notebook disassembly. In addition, in between procedures, the detailed disassembly procedure of individual modules will be provided for your service needs.

The disassembly procedure consists of the following steps:

- Battery Module
- ODD Module
- HDD Module
- Memory Module
- Wireless LAN Module
- Thermal Module
- CPU Module
- Keyboard Module
- Top Case Module
- Motherboard Module
- Woofer Module
- LCD Module

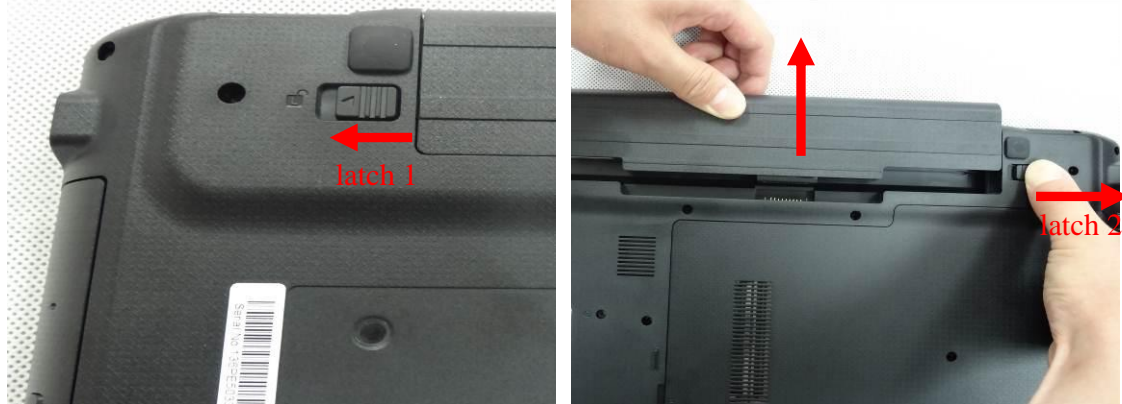
**BATTERY  
MODULE**

## Battery Module

*The illustrations below show how to remove the Battery module from the notebook.*

### Remove Battery Module

1. Open latch 1 and hold the latch 2 when take the battery away.



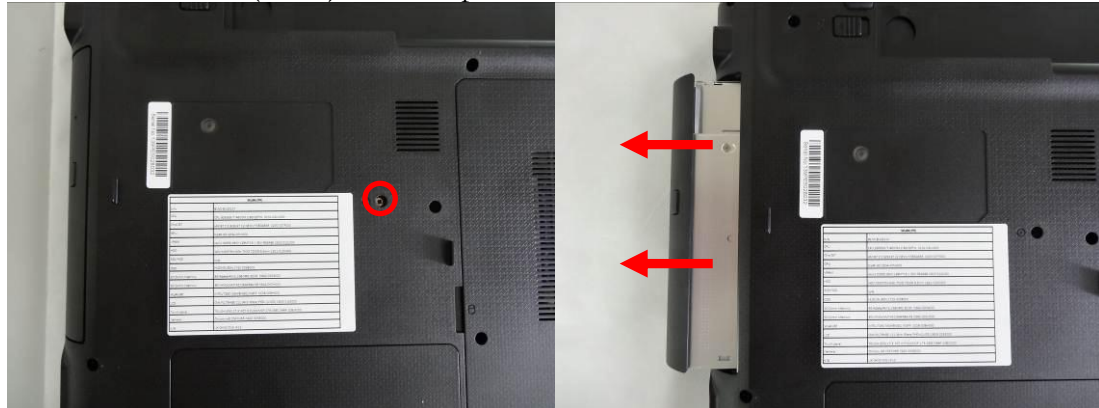
**ODD  
MODULE**

## ODD Module

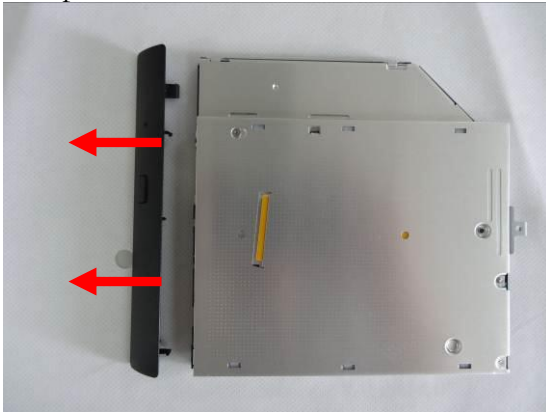
*The illustrations below show how to remove the ODD module from the notebook.*

### Remove ODD Module

1. Remove 1 screw (M2\*6) here and pull the ODD module out of the notebook.



2. Separate ODD bezel from the ODD module.



3. Remove 2 screws (M2\*3) on ODD bracket to separate it from the ODD module.



---

### HDD MODULE

---

## HDD Module

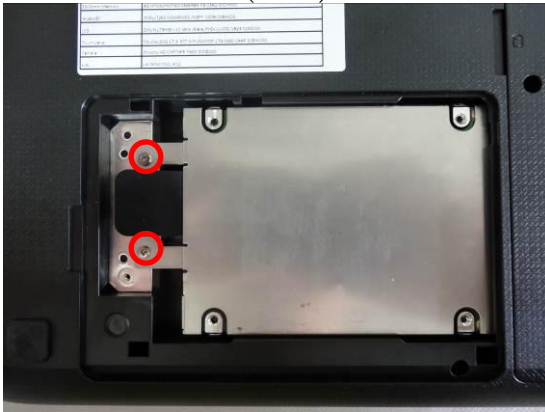
*The illustrations below show how to remove the HDD module from the notebook.*

### Remove HDD Module

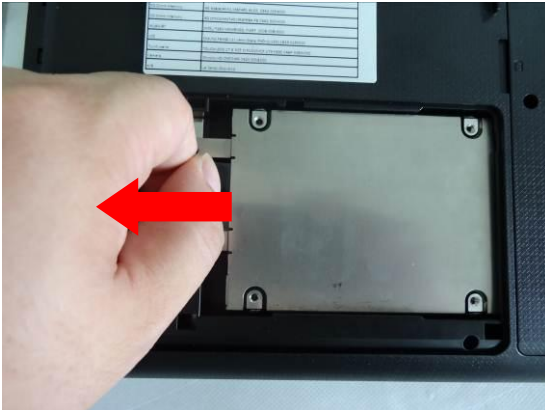
1. Remove 1 screw (M2\*6) on the mini door and take the mini door away.



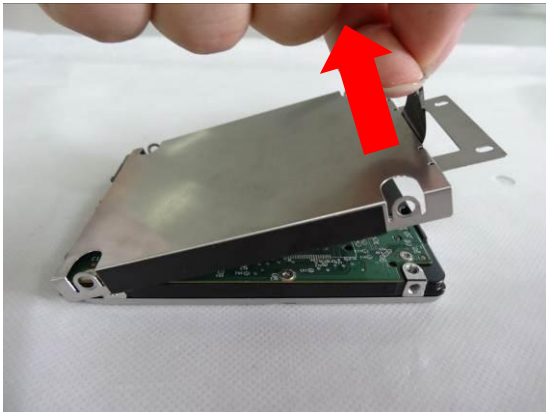
2. Remove 2 screws (M2\*4) on HDD bracket.



3. Pull the hard disk module toward the direction of the arrow and then lift it up and take it out.



4. Remove 4 screws (M3\*3) to separate HDD from HDD bracket.



---

### MEMORY MODULE

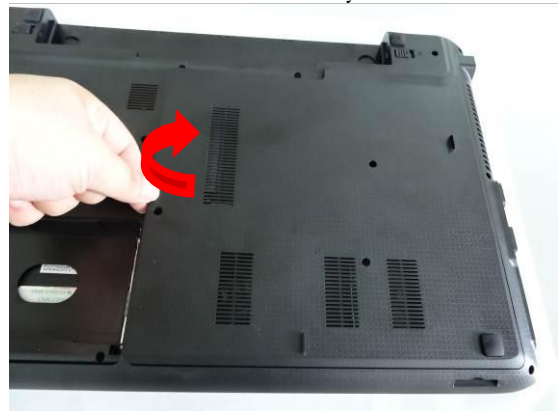
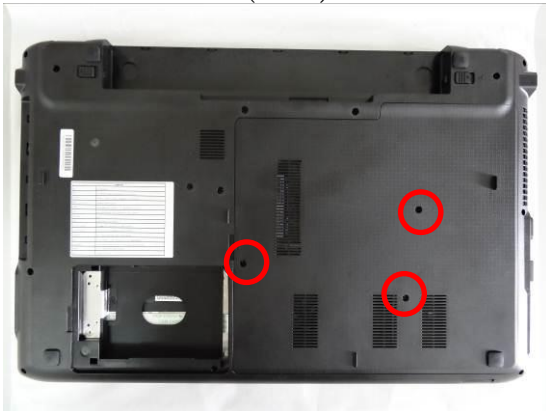
---

## Memory Module

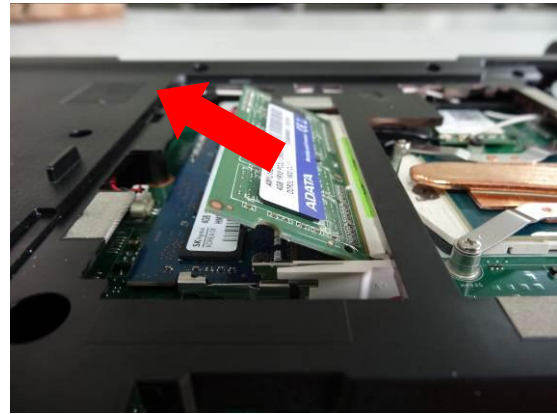
*The illustration shows how to remove the memory module from the notebook.*

### Remove Memory Module

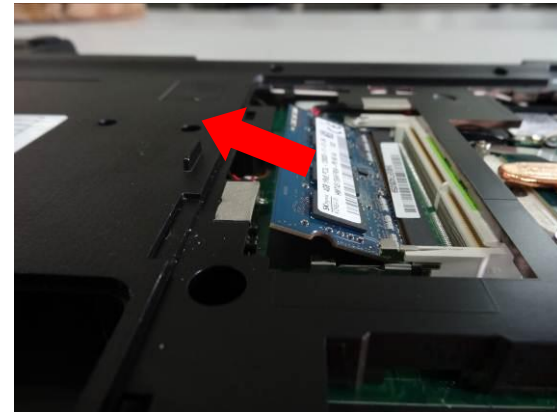
1. Remove 3 screws (M2\*6) on the main door and take the main door away.



2. Pull two latches here to pop the memory module up at 45° angles, and then pull out the module at that angle.



3. Pull two latches here to pop another memory module up at 45° angles, and then pull out the module at that angle.



---

**WLAN  
MODULE**

---

**Wireless LAN Module**

The illustration below shows how to remove the Wireless LAN module from the notebook.

**Remove Wireless LAN Module**

1. Disconnect the antennas and remove 1 screw (M2\*3), then pull out the card from its slot.



---

**T H E R M A L  
M O D U L E**

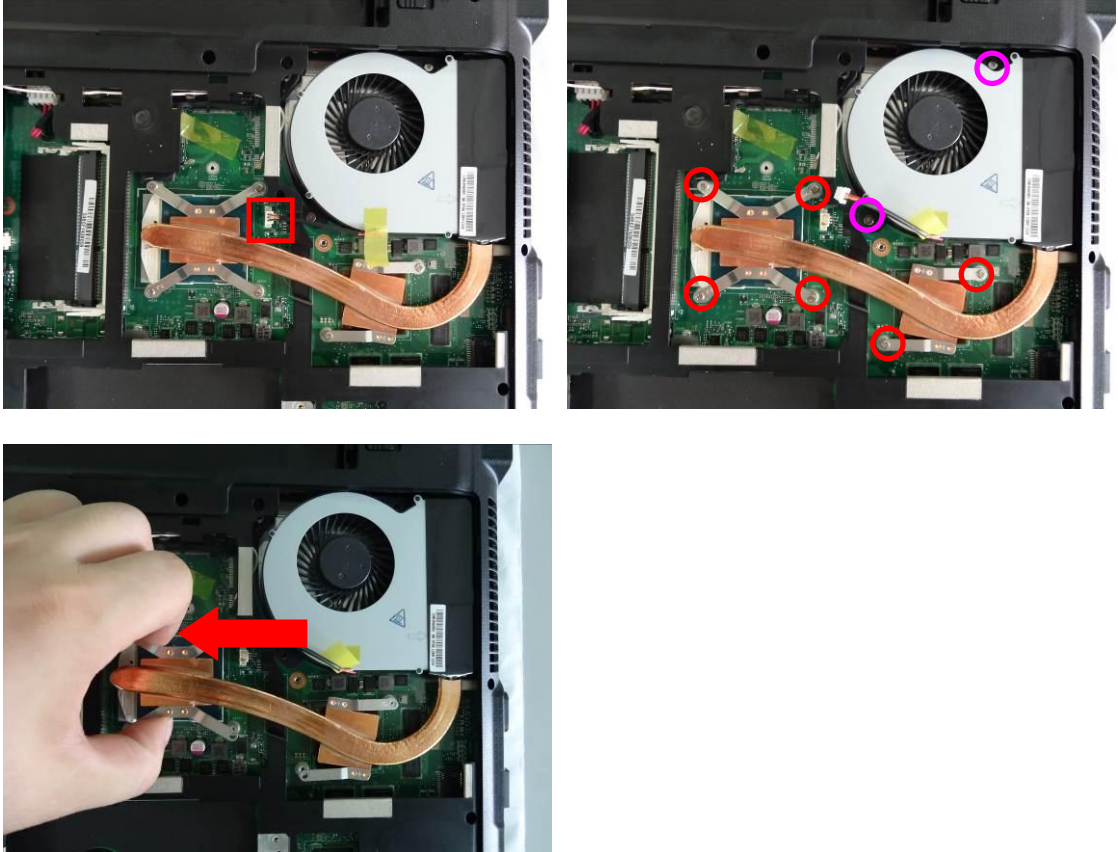
---

**Thermal Module**

*The illustration shows how to remove the thermal module from the notebook.*

**Remove Thermal Module**

1. Disconnect the fan cable and remove 2 screws (M2\*4) and 6 screws (M2\*3) on the thermal module, then take the thermal module away.



---

## CPU Module

---

### C P U

---

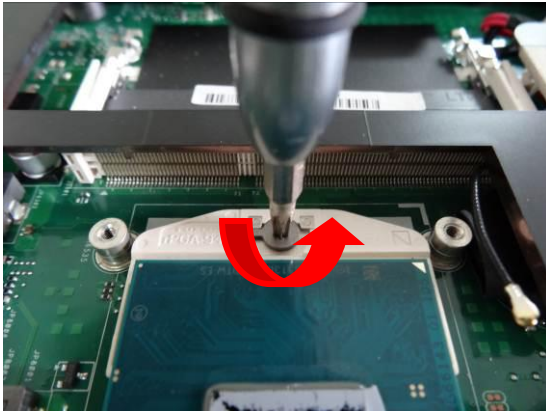
### M O D U L E

---

*The illustration shows how to remove the CPU module form the notebook.*

#### Remove CPU Module

1. Turn the non-removable screw here about 180 degrees counter-clockwise to loosen the CPU, and then remove the CPU module.



## Keyboard Module

---

### KEYBOARD

---

### M O D U L E

---

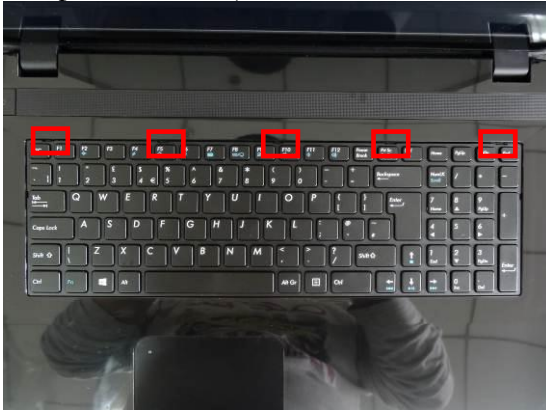
*The illustrations below show how to remove the keyboard.*

#### Remove Keyboard

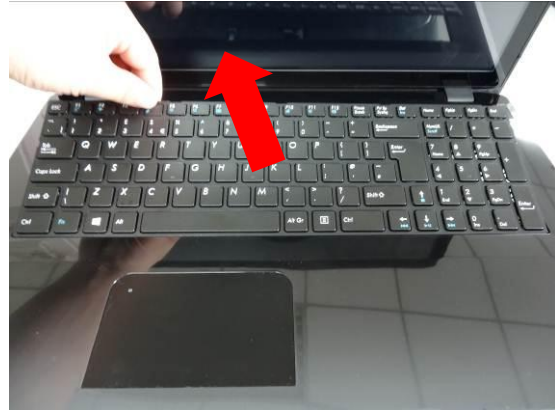
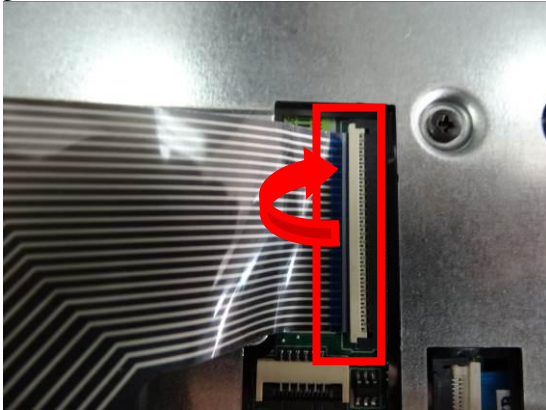
1. Remove 1 screw (M2\*6) on the bottom case.



2. Open 5 latches (Esc, F5, F10, Prt Sc, End) on keyboard module by a pair of tweezers.



3. Turn over the keyboard plate and disconnect the keyboard FPC and remove the keyboard plate.



---

**TOP CASE  
MODULE**

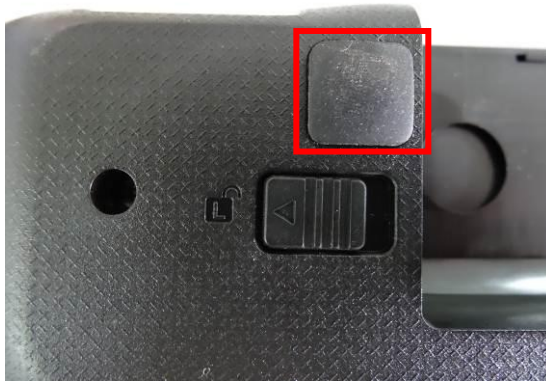
---

## Top Case Module

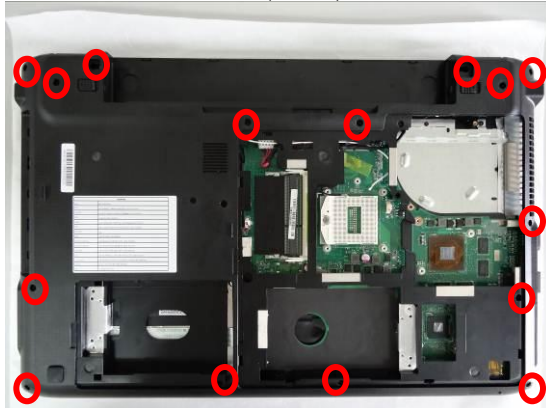
*The illustrations below show how to disassemble and remove the top case module of the notebook. The module contains the top case itself.*

### Remove Top Case Module

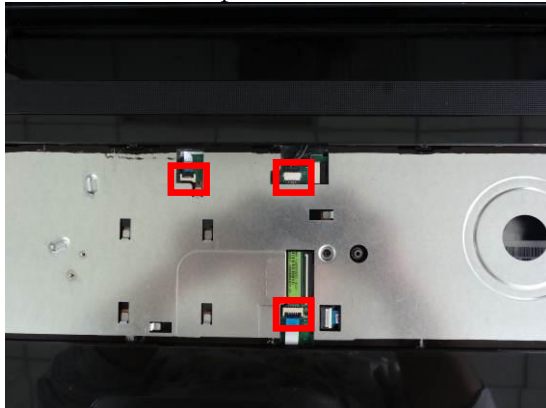
1. Remove 2 rubbers on the bottom case.



2. Remove 15 screws (M2\*6) on the bottom case.



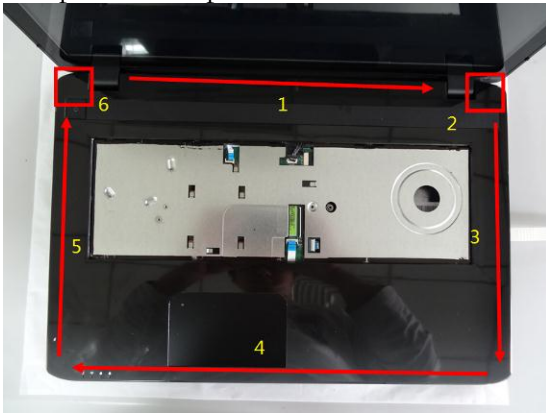
3. Disconnect the power switch board cable, speaker cable and touchpad cable on the MB.



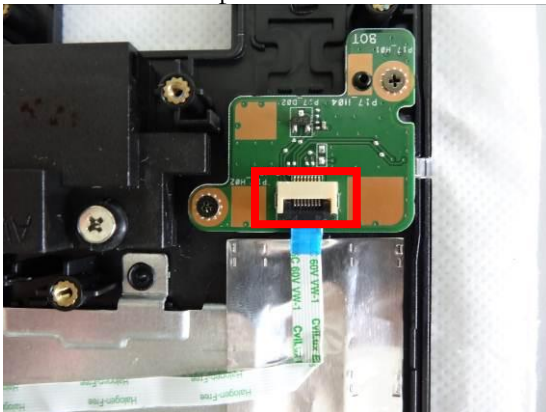
4. Remove 1 screw (M2\*6) on top case.



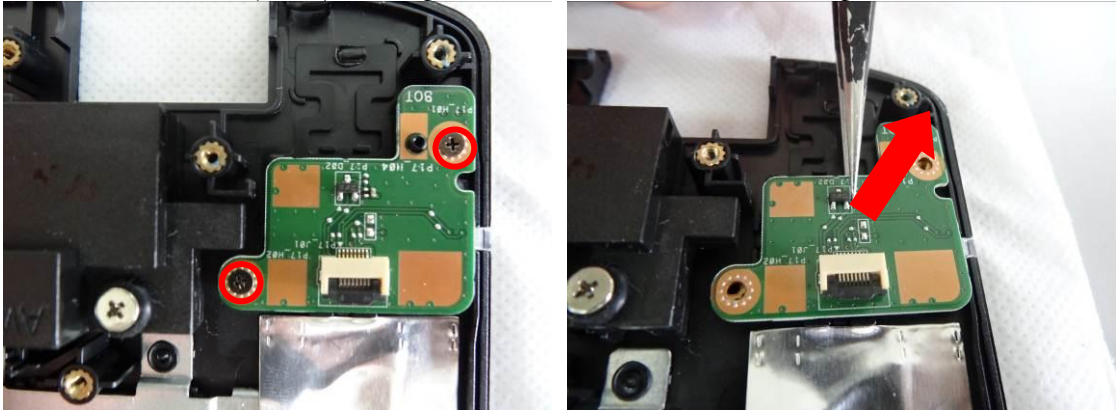
5. Separate the top case from the bottom case and then take the top case away.



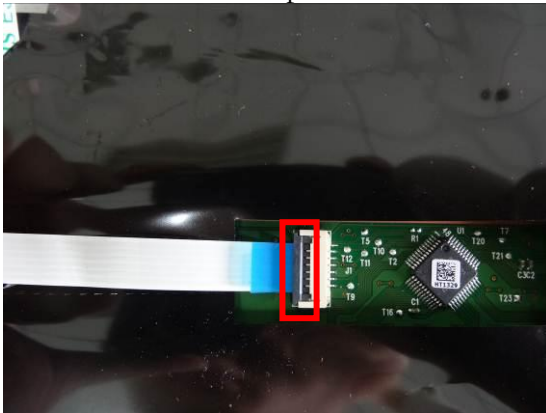
6. Disconnect the power board cable and take the power board cable away.



7. Remove 2 screws (M2\*3) on the power switch board. Then take the power switch board away.



8. Disconnect the touchpad cable on the touchpad and take the touchpad cable away.

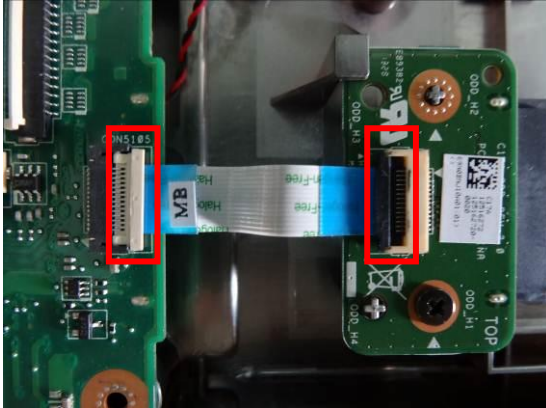


## Motherboard Module

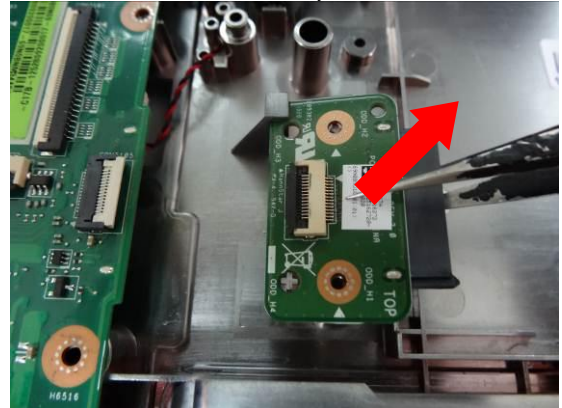
The illustrations below show how to disassemble and remove the Motherboard Module.

### Remove Motherboard Module

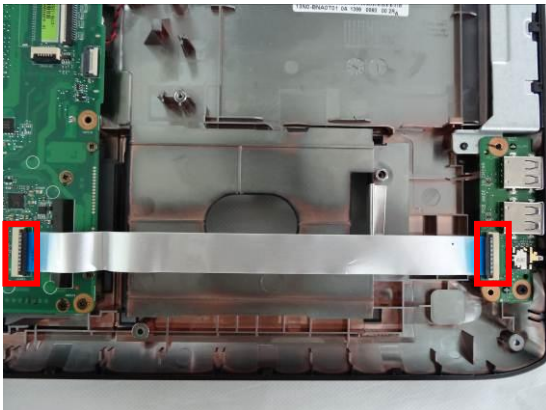
1. Disconnect the ODD board on the motherboard and ODD board to take the ODD board away.



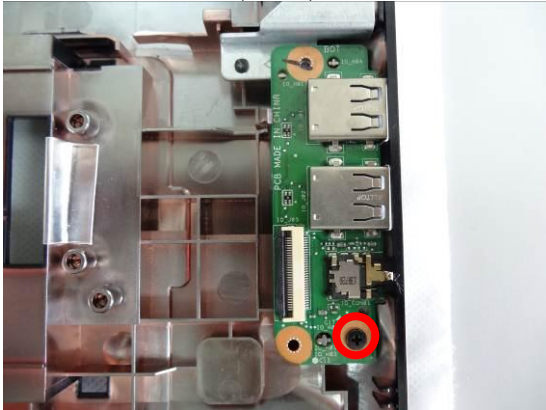
2. Remove 1 screw (M2\*6) on ODD board and take the ODD board away.



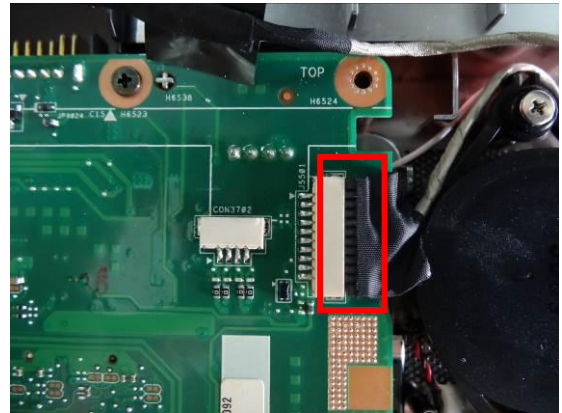
3. Disconnect IO board cable on the motherboard and IO board to take the IO board cable away.



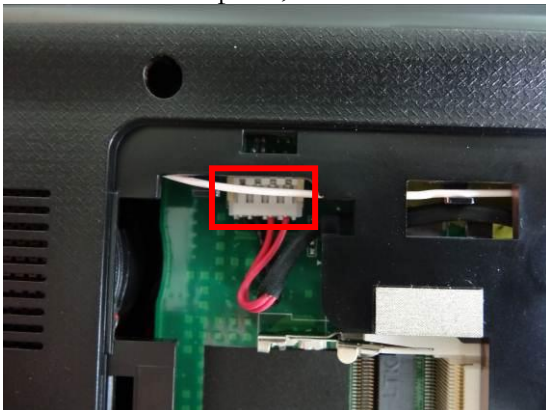
4. Remove 1 screw (M2\*4) on IO board and take the IO board away.



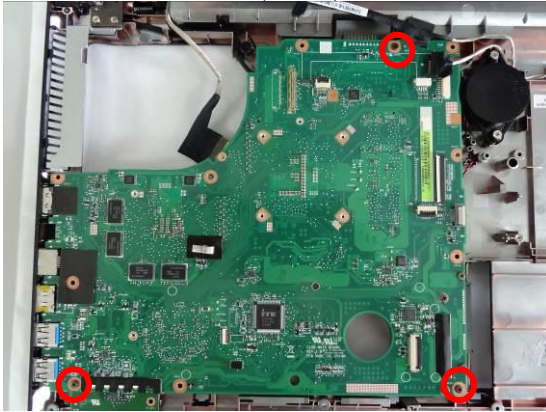
5. Disconnect the LVDS cable, touch panel cable and camera cable on the motherboard.



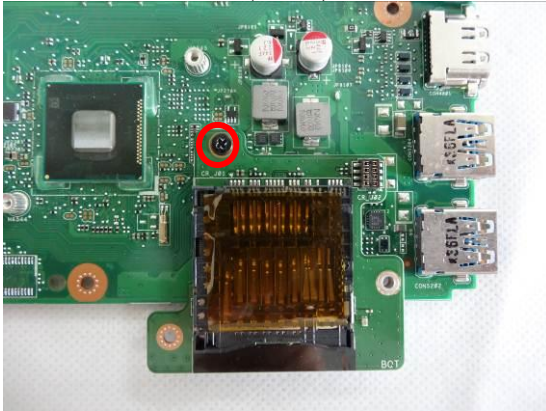
6. Close the LCD panel, turn over the notebook and disconnect the DC-in cable and woofer cable.



7. Remove 3 screws (M2\*6) on the motherboard. Then take the motherboard away.



8. Remove 1 screw (M2\*3) on the card reader board and take the card reader board away.



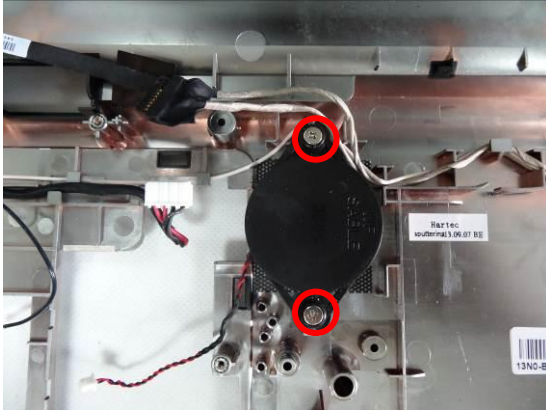
**W O O F E R**  
**M O D U L E**

## Woofer Module

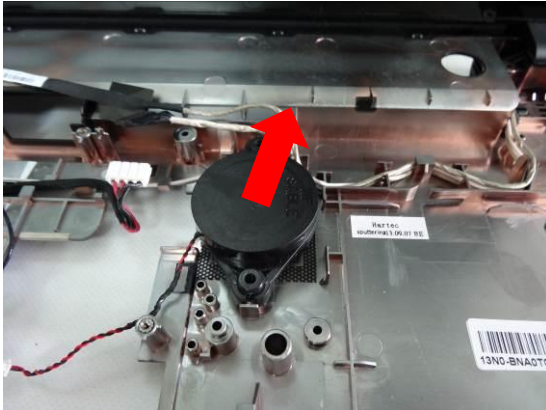
*The illustrations below show how to remove the Woofer module.*

### Remove Woofer Module

1. Pull out the woofer cable from its grooves carefully and remove 2 screws (M2\*2+5.15) on the woofer.



2. Lift to remove the woofer module.



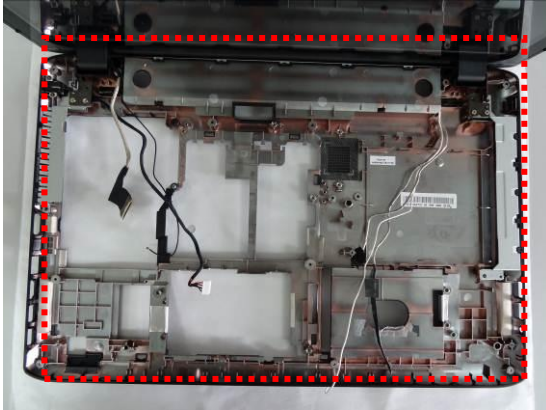
**L C D**  
**M O D U L E**

## LCD Module

*The illustrations below show how to remove the LCD module.*

### Remove LCD Module

1. Pull out the cables (WLAN antennas, LVDS cable, DC-in cable, touch panel cable and camera cable) from their grooves carefully.



2. Remove 4 screws (M2.5\*5) on LCD hinges. Then take the LCD module away.

